

# GENERAL INSTRUCTIONS FOR THE CARE OF HENRY TOOL SAND RAMMERS

## LUBRICATION

Before being put into actual service, all new sand rammers should have a small amount of kerosene oil poured into the air inlet. Run the rammer a few seconds to permit the kerosene to remove any gum, oil or grease from the working parts. Do not run the rammer too long because kerosene is not a lubricant. The hose should then be disconnected and the rammer oiled with a #10 acid free lubricating oil. The rammer should be oiled as often as needed to keep all surfaces protected while the rammer is in operation.

## VALVE BOX

The Henry Tool Valve box should be cleaned out at regular intervals to make sure the main valve slot is free from grit and dirt.


## PACKING

Before putting the rammer into use, the tightness of the packing should be checked. This may be done by pushing the piston rod in and out by hand. There should be a very slight drag in the movement of the rod. If the drag is too great, remove the lock clip from the slot in the packing nut and back off one notch. As the rammer receives continued use, causing the leaded packing to wear, adjustment should be made as often as necessary to maintain compression and the power of the rammer. This also prevents grit and foundry sand from working up into the cylinder to cause premature wear on both the rod and the cylinder wall. Packing is sold in sets at a very nominal cost and one or two sets should be kept on hand for replacement. Visual examination of the packing should be made regularly.

## GENERAL

Always keep the rear head screwed tightly to the cylinder to prevent air leakage which, in turn, causes loss of power. Regular dismantling and cleaning of all parts will keep your rammer up to full efficiency at all times and will greatly prolong the life of the tool.

	<p><b>⚠ WARNING</b></p>
	<p>Always wear eye protection when operating or performing maintenance on this tool.</p>

	<p><b>⚠ WARNING</b></p>
	<p>Air powered tools can vibrate in use. Vibration, repetitive motions or uncomfortable positions may be harmful to your hands and arms. Stop using any tool if discomfort, tingling feeling or pain occurs. Seek medical advice before resuming use.</p>

Updated 1/30/2004

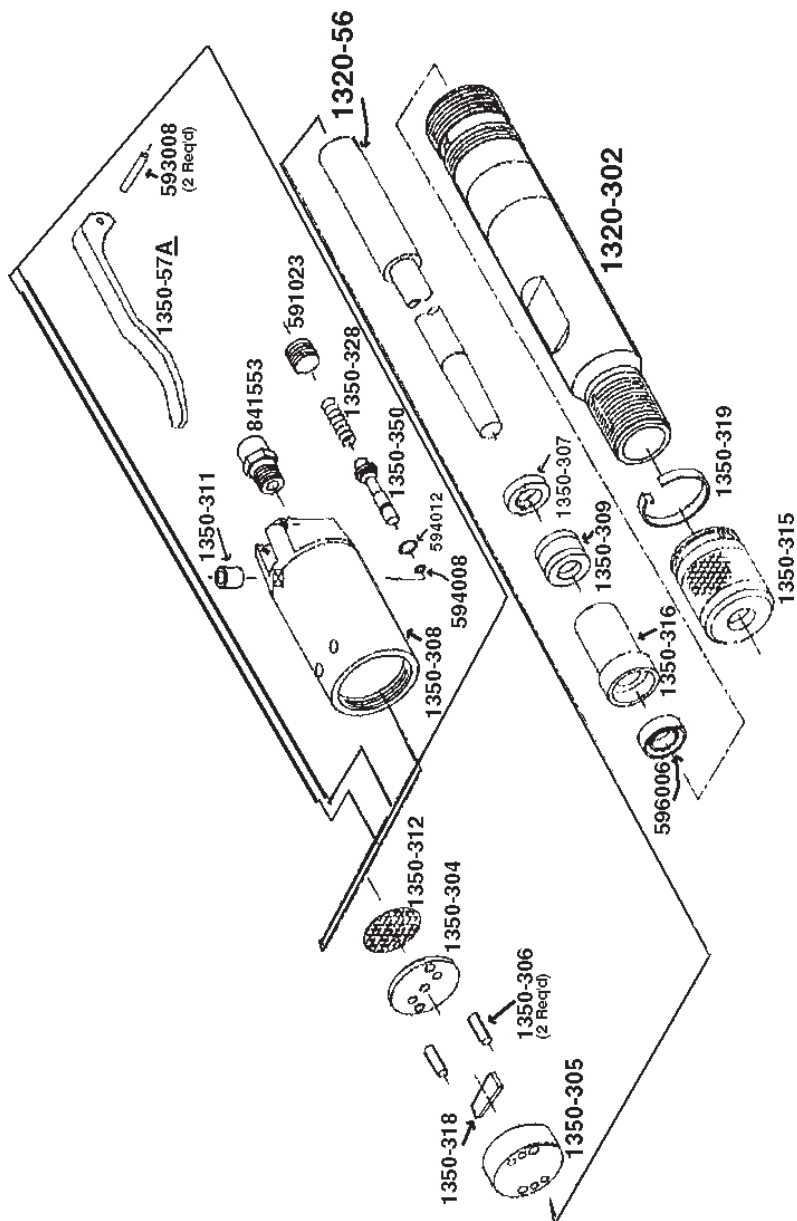
HENRY AIR TOOLS

# Models 1320-2BA



Model 1320-2BA Rammer

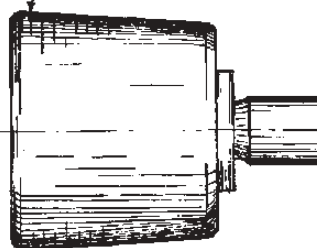
## BENCH RAMMER



- |           |                                    |
|-----------|------------------------------------|
| 591023    | Throt. Valve Spring Plug           |
| 593008    | Thrtl. Lever Pins (2 are Required) |
| 594008    | "O"-Ring                           |
| 594012    | "O"-Ring Nut                       |
| 596006    | Front Seal                         |
| 829558    | 2-3/8" Dia Rubber Butt             |
| 832925    | 2-3/8" Steel Butt                  |
| 841551    | Inlet Bushing                      |
| 832924    | 3" Steel Butt                      |
| 1320-302  | Rammer Barrel                      |
| 1350-304  | Valve Block Lid Cover              |
| 1350-305  | Valve Block                        |
| 1350-306  | Valve Block Dowel Pin              |
| 1350-307  | Packing Gland Washer               |
| 1350-308A | Alum. Backhead                     |
| 1350-309  | Packing                            |
| 1350-311  | Thrtl. Valve Bushing               |
| 1350-312  | Screen                             |
| 1350-315  | Packing Gland Cap                  |
| 1350-316  | Packing Gland Bushing              |
| 1350-318  | Main Valve                         |
| 1350-319  | Packing Nut Lock Clip              |
| 1350-328  | Throt. Valve Spring                |
| 1350-350  | Thrtl. Valve                       |
| 1320-56   | Piston                             |
| 1350-57A  | Thrtl. Valve Lever                 |
| 829558-AR | 2-3/8" Dia Alum./Rubber Butt       |
| 829559-AR | 3" Alum./Rubber Butt               |

HENRY AIR TOOLS Updated 1/30/2004

### RUBBER BUTT



## BUTT & PEINS

- |           |                              |
|-----------|------------------------------|
| 829558    | 2-3/8" Dia Rubber Butt       |
| 832924    | 3" Steel Butt                |
| 832925    | 2-3/8" Steel Butt            |
| 829558-AR | 2-3/8" Dia Alum./Rubber Butt |
| 829559-AR | 3" Alum./Rubber Butt         |