

Models

20 G

20 GM



SAFETY FIRST!

ALWAYS COMPLY WITH:

1. General Industry Safety & Health Regulations, Part 1910, OSHA 2206, available from: Sup't of Documents; Government Printing Office; Washington DC 20402
2. Safety Code for Portable Air Tools, ANSI B186.1 available from: American National Standards Institute, Inc.; 1430 Broadway; New York, NY 10018
3. State and Local regulations.

Portions of the above codes and regulations are listed below for quick reference.

THESE EXCERPTS ARE NOT INTENDED TO BE ALL INCLUSIVE - STUDY AND COMPLY WITH ALL REGULATIONS!

1. TOOL INTENT - Tools shall be used only for purposes intended in their design (refer to product catalog).
2. AIR SUPPLY - Test and operate tools at 90 PSIG maximum unless tool is marked otherwise. Use recommended airline filters-regulators-lubricators.
3. UNUSUAL SOUND or VIBRATION - If tool vibrates or produces an unusual sound, repair immediately for correction.
4. OPERATOR PROTECTIVE EQUIPMENT - Wear goggles or face shield at all times tool is in operation. Other protective clothing shall be worn, if necessary. SEE REGULATIONS.
5. SAFETY MAINTENANCE PROGRAM - Employ a safety program to provide inspection and maintenance of all phases of tool operation and air supply equipment in accordance with "Safety Code for Portable Air Tools."

WARNING: The signal word "Warning" identifies all notes on safe work practices in this operating instruction, alerting to hazards for life and health of people. Observe these notes and proceed with special care in the cases described. Pass all safety instructions on to other operators. In addition to the safety instructions in this operating instruction, the general local safety and accident prevention rules must be observed.

Important Notes

CAUTION The signal word "caution!" identifies all portions of this operating instruction meriting special attention to ensure that guidelines, rules, hints and the correct work procedures are observed; and, to prevent damage to and destruction of the machine and/or parts.

A recommended spare part (or set) for every five (5) tools. Small, low cost or easily lost parts should be stocked as 3-4 per 10 tools.

WARNING' Disconnect the air supply hose before servicing the tool.

INSTALLATION

For most efficient operation, 90 psig (620 kPa) of clean dry air is required at the tool with the tool running, with-out extreme fluctuation. Minimum recommended hose size is 3/8" I.D. when the length of the hose is eight feet or less. An air line filter and lubricator, should be used. Hose should be blown out before attaching to the tool.

Loss of Power

A loss of power may not be related to the tool. First, check the air line pressure. It should be 90 psi at the tool while operating.

LUBRICATION

Lubricate the motor with an air line lubricator, using a light air motor oil. Adjust the lubricator to dispense one drop per cycle or three drops per minute.

CAUTION Do not use substitutes for oil and grease. This could result in damage to the tool.

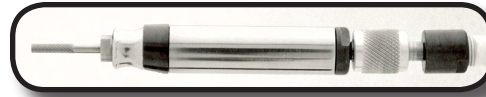
MAINTENANCE

1. Proper and continuous lubrication.
2. Blow out air hose to assure a clean air supply.
3. Be sure the air filter and line lubricator are clean.
4. Fill the line lubricator before operation.
5. Place a few drops of oil into the air inlet of the tool before attaching the air line.
6. Use moisture separators to remove water from the air line.
7. **CAUTION** Do not use solvent on bearings or on any parts made of a synthetic material.
8. Do not remove bearings unless replacement is necessary; bearings are a press fit.

HENRY AIR TOOLS

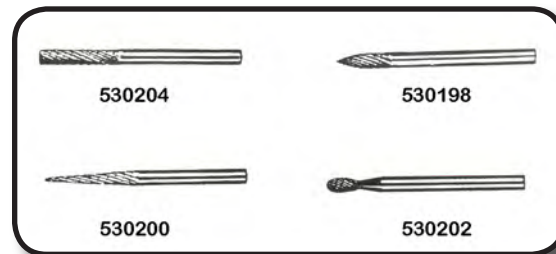
Models

20 G
20 GM



This tool is designed to operate on 90 psig(6.2bar) maximum air pressure with 1/8" (3.25mm) hose. Wear safety goggles. Do not use any wheel wheel or carbide burr for which the operating speed that is rated lower than 60,000 R.P.M.

Part Number	Description
200-1	Case
200-GM-1	Case
200-2	Cylinder
200-3	Rear Thrust plate
200-4	Coupling
200-5	Rotor
200-5-R	Spacer
200-6	Blades (3 are req'd in this tool.)
200-7	Front thrust plate
200-8	Bearing (2 are required per tool)
200-9	O-ring
200-10	valve sleeve
200-11	Valve stem
200-12	Valve coupling
* 200-13	Collet (see notation)
200-13-3	3mm collet
200-13-098	"3/32"" collet"
200-14 *	Collet nut
200-15	Exhaust sleeve
200-16	O-Ring (2 are req'd)
200-17	Collet lock pin
200-30	Muffler
400-39	Lock ring
11000-028-1	"9/32"" wrench"
*Purchase as AA-100-13&14 collet and nut assembly.	
200-41	"1/8"x 5' hose
530198	Taper carbide burr
530200	Tree type burr
530202	Ball type burr
530204	Cylindrical plain type carbide burr.
Cylindrical plain type carbide burr.	



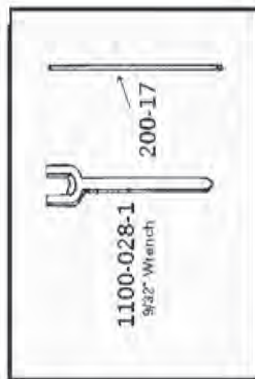
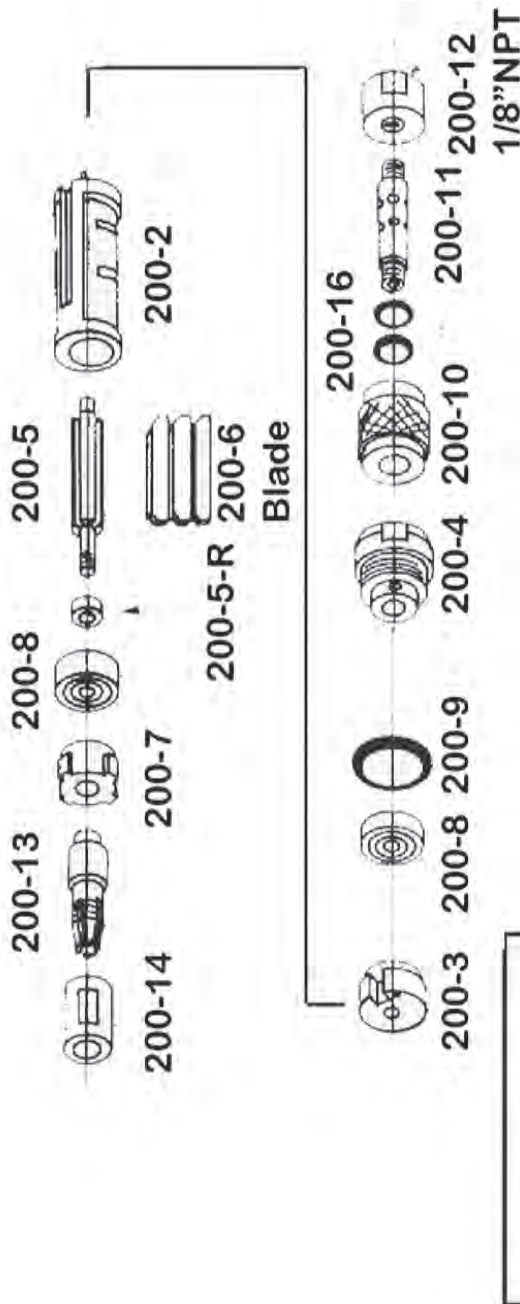
HENRY AIR TOOLS

Models

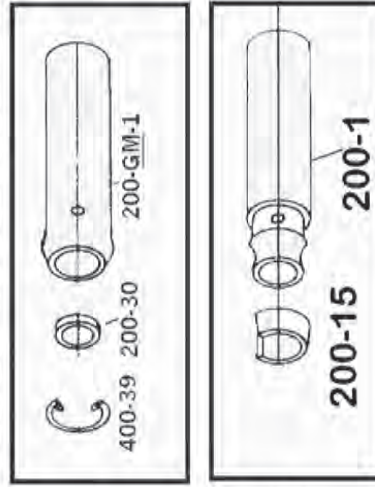
20 G
20 GM



60,000 RPM GRINDER



Model 20-GM Case (Muffled)



Motor Cases

HENRY AIR TOOLS