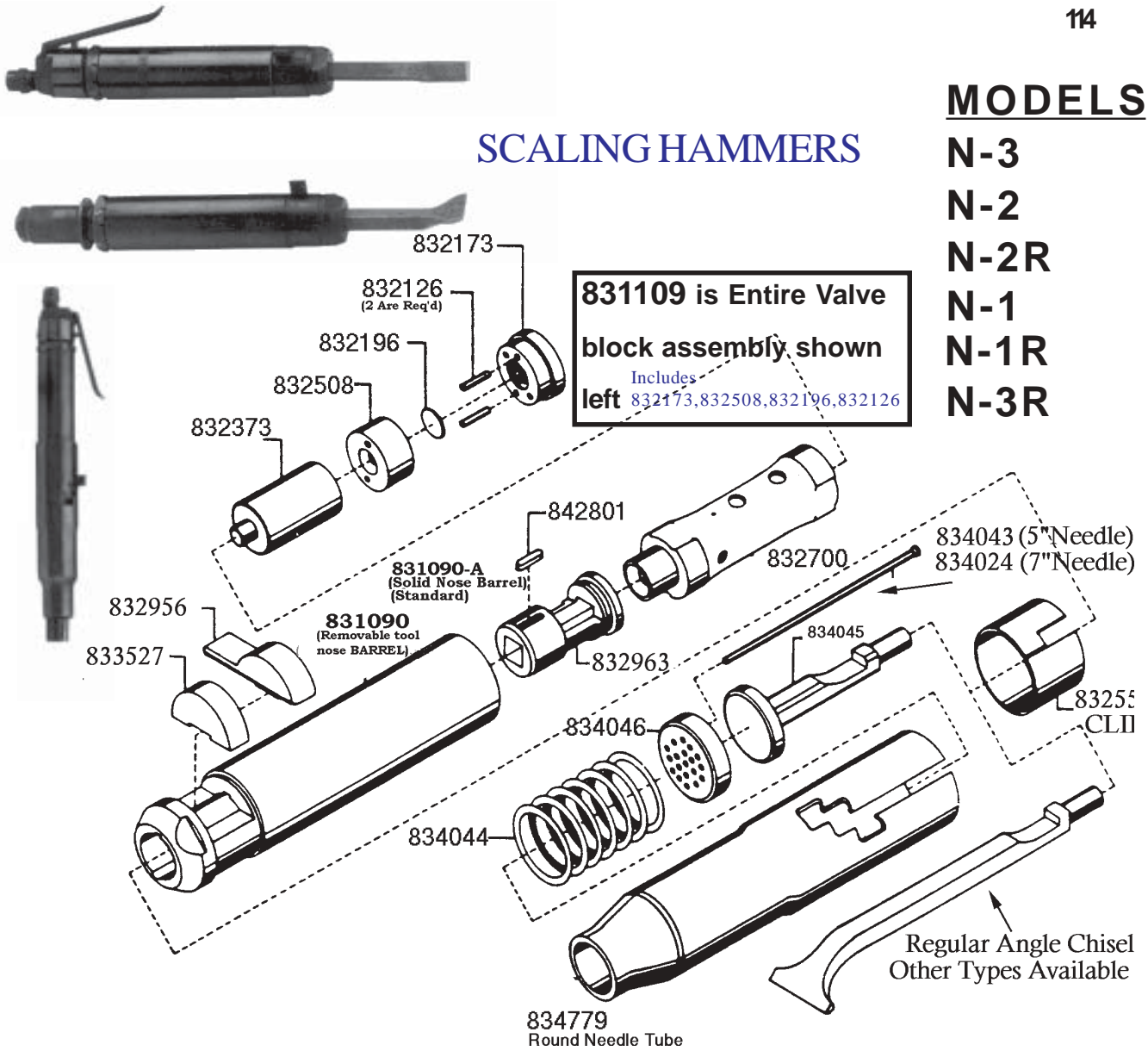


# SCALING HAMMERS

## MODELS

- N-3
- N-2
- N-2R
- N-1
- N-1R
- N-3R



HENRY AIR TOOLS Updated 1/30/2004

PART NO	NAME OF PART	QUAN.	PART NO.	NAME OF PART
831090-A	Barrel(SOLID)(includes 832700)	1	834779	Needle Tube (Round)
831090	Barrel(Includes 832700,832963 and 842801)(Replaceable Nose)	1		<b>OPTIONAL PART NOT SHOWN</b>
832126	Valve Block Dowel Pin	1	834024	Needle (7" Length) 19 Required
832173	Valve Block Button	1		<b>SUB-ASSEMBLIES</b>
832196	Valve	1	<b>831109</b>	Valve Block Assembly COMPLETE Includes the following: (832173,832508,832196,832126)
832373	Plunger	1	<b>831322</b>	Round Needle Front End Sub (Part Nos.834043,834044,834045 834046,834779)
832508	Valve Block	1		
832554	Retainer Clip	1		
832700	Barrel Sleeve	1		
832956	Retainer	1		
833527	Retainer Buffer	1		
834043	Needle (5")	19		
834044	Needle Holder Spring	1		
834045	Needle Driver	1		
834046	Needle Holder	1		

Regular Angle Chisel  
Other Types Available

# Scaling Hammers (Continued)

## DISASSEMBLY INSTRUCTIONS FOR LEVER Backhead

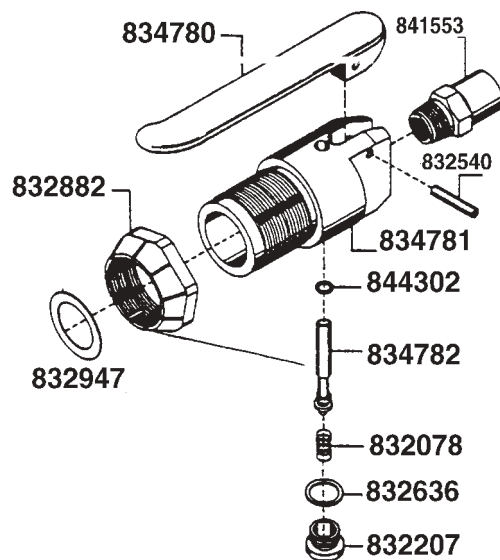
**DISASSEMBLY** Unscrewing the throttle valve cap, No. 869311, will allow the throttle valve spring, No. 832078, and throttle valve, No. 834782, to be removed from the backhead. Using a suitable punch, drive out the throttle lever pin No. 832540, and remove the throttle lever No. 834780.

The screen bushing, No. 841553, may be unscrewed for cleaning and inspection of the air screen.

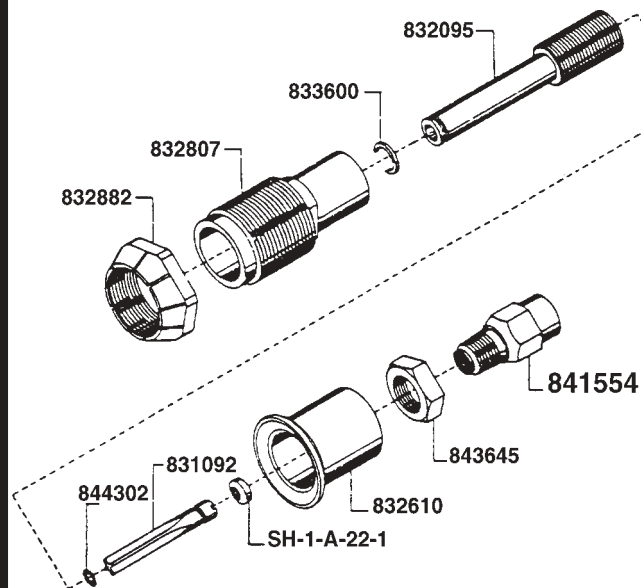
**REASSEMBLY** The backhead is reassembled in the reverse order of disassembly. The throttle valve seal, No. 844302, should be re replaced before reassembly.



## Lever Backhead



## Push Type Backhead



<u>PART NO.</u>	<u>NAME OF PART</u>
832078	Spring
832207	Thrtl Valve Cap
832540	Lever Pin
832636	Gasket
832882	Bkhd Lock Ring
832947	Bkhd Position Spacer
834780	Lever
834781	Backhead (Bare)
834782	Thrtl.Valve(w/844302)
841553	Bushing
844302	"O"-Ring
	<b>SUB-ASSEMBLY</b>
831851	Lever Backhead Assembly
	<b>COMPLETE</b>

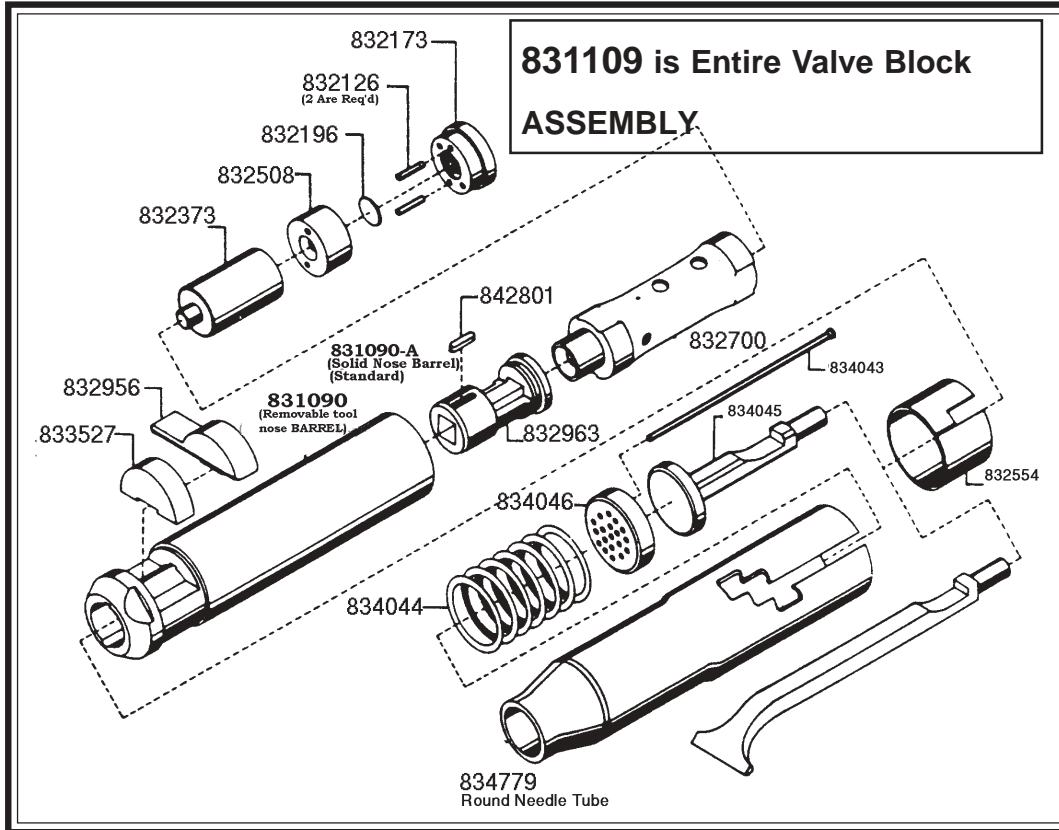
<u>PART NO.</u>	<u>NAME OF PART</u>
831092	Thrtl. Valve(w/844302)
832095	Thrtl. Valve Casing
832610	Controlling Valve Handle
832807	Backhead
832882	Backhead Lock Ring
833600	Snap Ring
SH-1-A-22-1	Valve Retainer
841554	Bushing
843645	Casing Lock Nut
844302	"O"-Ring
	<b>SUB-ASSEMBLIES</b>
831054	Valve casing with 831092 and 832095
831219	<b>COMPLETE</b> Push Throttle Assembly

Updated 1/30/2004

**HENRY AIR TOOLS**

# Scaling Hammers (CONTINUED)

# MODEL N-3R



## CHISELS AVAILABLE



839740

839051

839467



1/2" Square Shank



839341

### SPECIFICATIONS

Part No.	Description	Cutting Edge Width	Length
839051	D-200-7½ Narrow Chisel	¾"	7½"
839341	D-200-12 Narrow Chisel	¾"	12"
839335	D-200-18 Narrow Chisel	¾"	18"
839467	B-200-7 Wide Chisel	1⅝"	7"
839299	C-200-12 Angle Chisel	1⅝"	12"
839334	C-200-18 Angle Chisel	1⅝"	18"
839050	C-200-7 Angle Chisel	1⅝"	7¼"

\*Other types of chisels also available.

HENRY AIR TOOLS® Updated 1/30/2004