

# HENRY AIRTOOLS

American Made Industrial Tools

## MODELS

400GHSD

400GHKSD

**SIDE EXHAUST**

## General Safety and Maintenance Manual



## 400GH Series (1.2 H.P.) Horizontal Die Grinder (Collet Output)



### SIDE EXHAUST HORIZONTAL COLLET GRINDER

Model Number	Exhaust Direction	Throttle Type	Speed	Power Output	Weight		Overall Length	Housing Diameter	Working Air Consumption	Spindle Thread & Length/ Output
					Alum. CASE	STEEL CASE				
400GHSD;18000;1/4"	SIDE	(L) Lever or (K) Safety Lever	18000RPM or 20000	1.2 H.P. (900 W)		3.8 Lbs. (1.7 Kg)	12.5 Inch (318 mm)	1.6 Inch (41 mm)	25 cfm (11.8 L/S)	ER COLLET
400GHKSD;18000;1/4										ER COLLET

**THE HENRY TOOL CO., MANUFACTURED BY HENRY TOOLS**

**498 SO. BELVOIR BLVD., SOUTH EUCLID, OH 44121 U.S.A.**

**PH: (216) 291-1011 OR (800) 826-5257 • FAX: (216) 291-5949 OR (800) 303-2800**

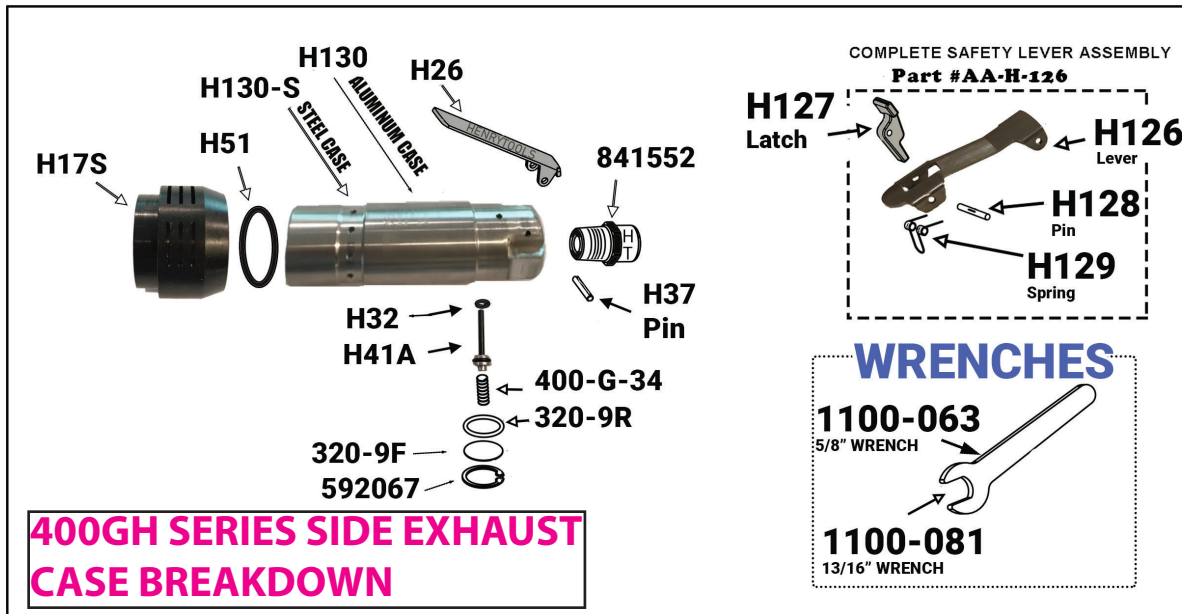
**EMAIL: DAVIIDH@MSN.COM • WEBSITE: WWW.HENRYTOOLS.COM**



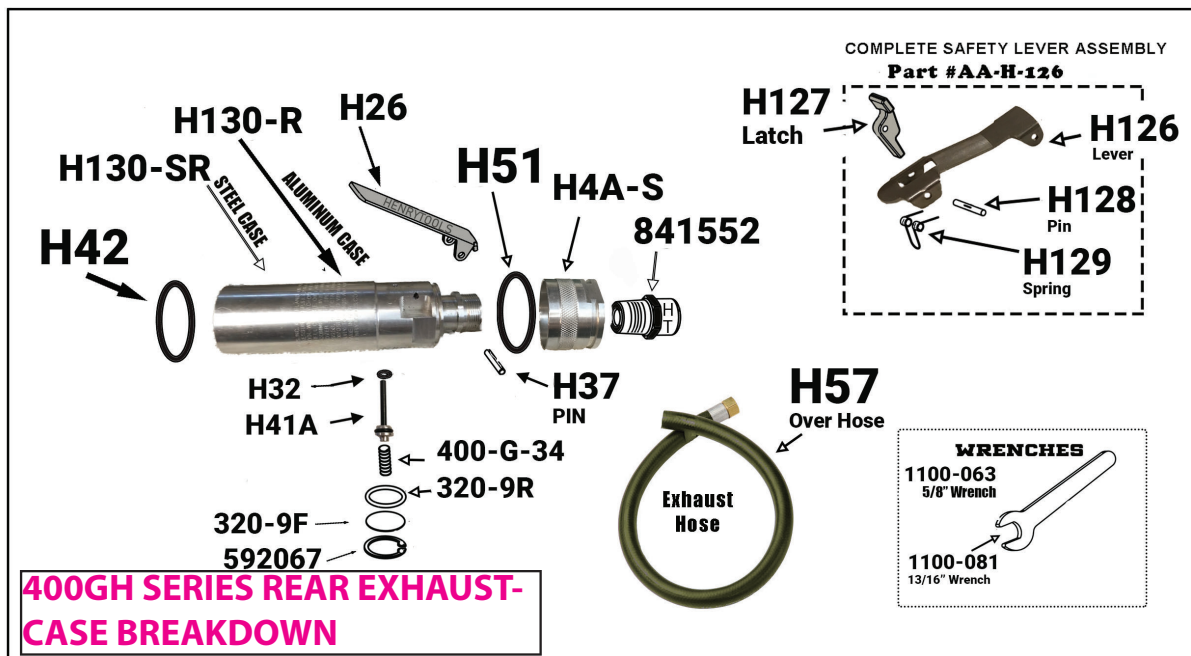
Model 400GHSK SIDE EXHAUST Horizontal Grinder featuring a (1.2 H.P.) motor. ("SIDE EXHAUST" COLLET MODEL)

**MODELS**  
**400GHSD**  
**400GHKSD**

## SIDE EXHAUST CASE



## REAR EXHAUST CASE





Model 400GHSD SIDE EXHAUST GRINDER with (1.2 H.P.) motor. (SIDE EXHAUST COLLET MODEL)

# SIDE EXHAUST

**MODELS**  
400GHSD  
400GHKSD

# COLLET MODEL

## COLLET MODEL FRONT END ASSEMBLY

### COLLET MODEL FRONT END ASSEMBLY



### FRONT END EXTENSION ASSEMBLY



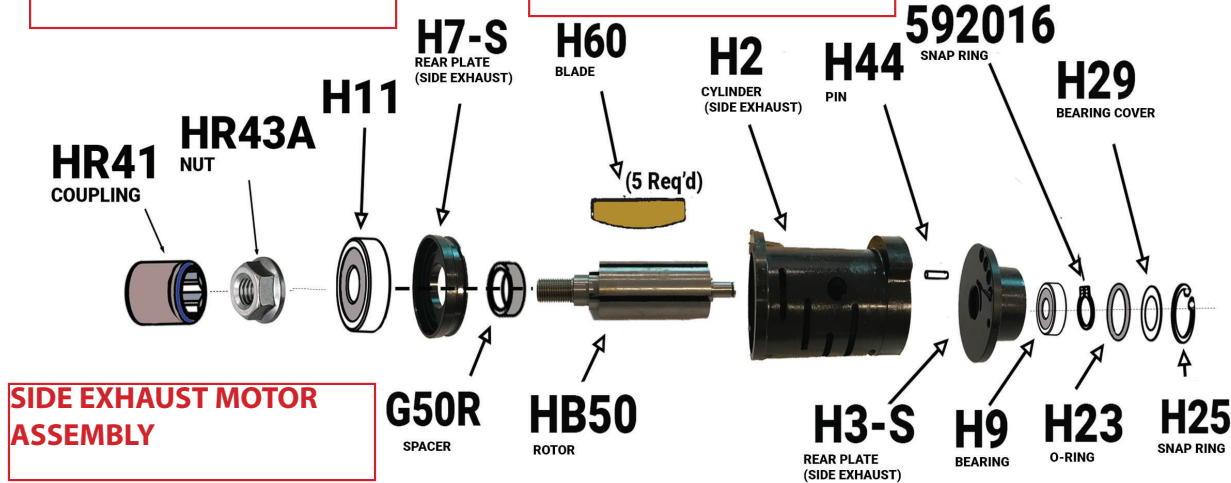
Model 400GHSK SIDE EXHAUST GRINDER with (1.2 H.P.) motor. (SIDE EXHAUST COLLET MODEL)

**MODELS**  
**400GHSD**  
**400GHKSD**

# SIDE EXHAUST

## SIDE EXHAUST MOTOR ASSEMBLY

## SIDE EXHAUST MOTOR ASSEMBLY



## SIDE EXHAUST MOTOR ASSEMBLY

PART NUMBER	DESCRIPTION
592016	SNAP RING
592067	SNAP RING (400GH)
841552	SCREEN BUSING
100-081	13/16" WRENCH
1100-063	5/8" WRENCH
320-9F	VALVE COVER (400-GH)
320-9R	O-RING
400-G-34	SPRING
AA-H126	SAFETY LEVER ASSEMBLY COMPLETE (400GH)
G50R	SPACER (400GH)
H11	BEARING
H126	LEVER (400GH)
H127	LATCH (400GH)
H128	PIN (400GH)
H129	SPRING (400GH)
H-130	ALUM.CASE(SideEXHAUST) (400GH)

PART NUMBER	DESCRIPTION
H130-R	REAR EXHAUST CASE ALUMI-NUM (400GH)
H130-S	STEEL CASE (SIDE EXHAUST) (400GH)
H130-SR	REAR EXHAUST CASE STEEL (400GH)
H-17S	EXHAUST SLEEVE (400GH)
H2	CYLINDER (SIDE EXHAUST) (400GH Series)
H23	O-RING (400GH)
H25	SNAP RING (400GH)
H26	STANDARD LEVER (400GH)
H29	BEARING COVER (400GH)
H32	O-RING (400GH)
H37	PIN (400GH)
H3-S	REAR END PLATE (400GH)(SIDE EXHAUST)
H41A	THROTTLE VALVE (400GH)
H42	O-RING (400GH)

HENRY TOOLS, INC. Ph: (216) 291-1011 or (800) 826-5257



Model 400GHSK SIDE EXHAUST GRINDER with (1.2 H.P.) motor. (SIDE EXHAUST COLLET MODEL)

**MODELS**  
**400GHSD**  
**400GHKSD**

**SIDE EXHAUST**

**SIDE EXHAUST**

PART NUMBER	DESCRIPTION
H44	PIN (400GH)
H4A-S	REAR EXHAUST SLEEVE DIFFUSER (400GH)
H51	O-RING (400GH)
H57	EXHAUST HOSE (400GH)
H60	ROTOR BLADE (400GH) (5 are Req'd)
H7-S	FRONT ENDPLATE (SIDE EXHAUST) (400GH)
H9	REAR BEARING (400GH)
HB50	ROTOR (400GH Series)
HC-2	COLLET CAP (400GH)
HC-3-1/4"	1/4" INSERT (400GH)
HC-3-3/8"	3/8" INSERT (400GH)
HC670	COLLET BODY (400GH)
HG11	BEARING PAIR (400GH)
HGA14-SC	FRONT SPINDLE FOR 400GHSD COLLET MODEL
HGA15	BEARING CAP (400GH)
HGA-1-S	STEEL FRONT EXT. HOUSING (400GH)
HR41	COUPLING (400GH)
HR43A	NUT (400GH)

**510286 REPAIR KIT**

Includes the following:

QTY	PART NO.	DESCRIPTION
1	H11	FRONT BEARING
5	H60	ROTOR BLADE
1	H9	REAR BEARING
1	H23	O-RING
1	592016	SNAP RING
1	H24	BEARING COVER
1	H25	SNAP RING
1	H32	O-RING
1	592044	SNAP RING
1	847528	BEARING
1	HG11	BEARING PAIR