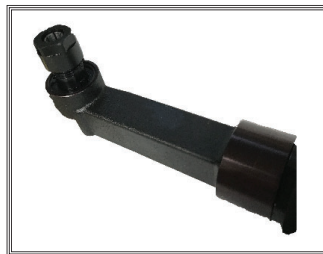
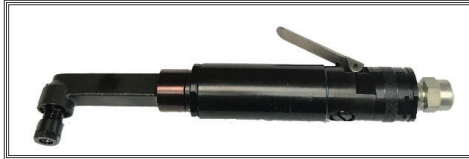


HENRY AIRTOOLS

American Made Industrial Tools

MODELS
420RA4R
420RARS
420RARD
425RA4R
425RARS
425RARD

General Safety and Maintenance Manual



REAR EXHAUST MODEL



REAR EXHAUST MODEL

REAR EXHAUST MODEL

REAR EXHAUST MODEL

Model Number	Exhaust Direction	Throttle Type	Speed	Power Output	Weight		Overall Length	Housing Diameter	Working Air Consumption	Spindle Thread & Length/Output	Wheel Aluminum Steel Capacity
					Alum. CASE	STEEL CASE					
420RA4RS;13000;427 (4" Guard)	REAR	(L) Lever or (K) Safety Lever	13000 R.P.M. (Standard)	1.2 H.P. (900 W)	3.1 Lbs. (1.4 Kg)	3.5 Lbs. (1.6 Kg)	9.8 Inch (249 mm)	1.6 Inch (41 mm)	25 cfm (11.8 L/S)	3/8-24 x 0.98 Inch (25 mm)	4 inch (100 mm), 6 inch (150 mm)
420RA6RS;13000;627 (6" Guard)					3/8-24 x 0.6 Inch						
420RARD (Erickson collet)					ERICKSON COLLET	1/4 Inch Burrs/Mounted Points Burrs/Mounted points Matching the Insert Size					
420RAR-INT (Internal Thread mounting)					INTERNAL THREAD MOUNTING						

THE HENRY TOOL CO., MANUFACTURED BY HENRY TOOLS

498 SO. BELVOIR BLVD., SOUTH EUCLID, OH 44121 U.S.A.

PH: (216) 291-1011 OR (800) 826-5257 • FAX: (216) 291-5949 OR (800) 303-2800

EMAIL: DAVIIDH@MSN.COM • WEBSITE: WWW.HENRYTOOLS.COM

General Operators Instructions and Service Manual



Model 420RARD Rear Exhaust Angle grinder with Erickson style collet for use with carbide burrs , etc.



Model 420RA4R Rear exhaust angle grinder with 4" wheel guard.

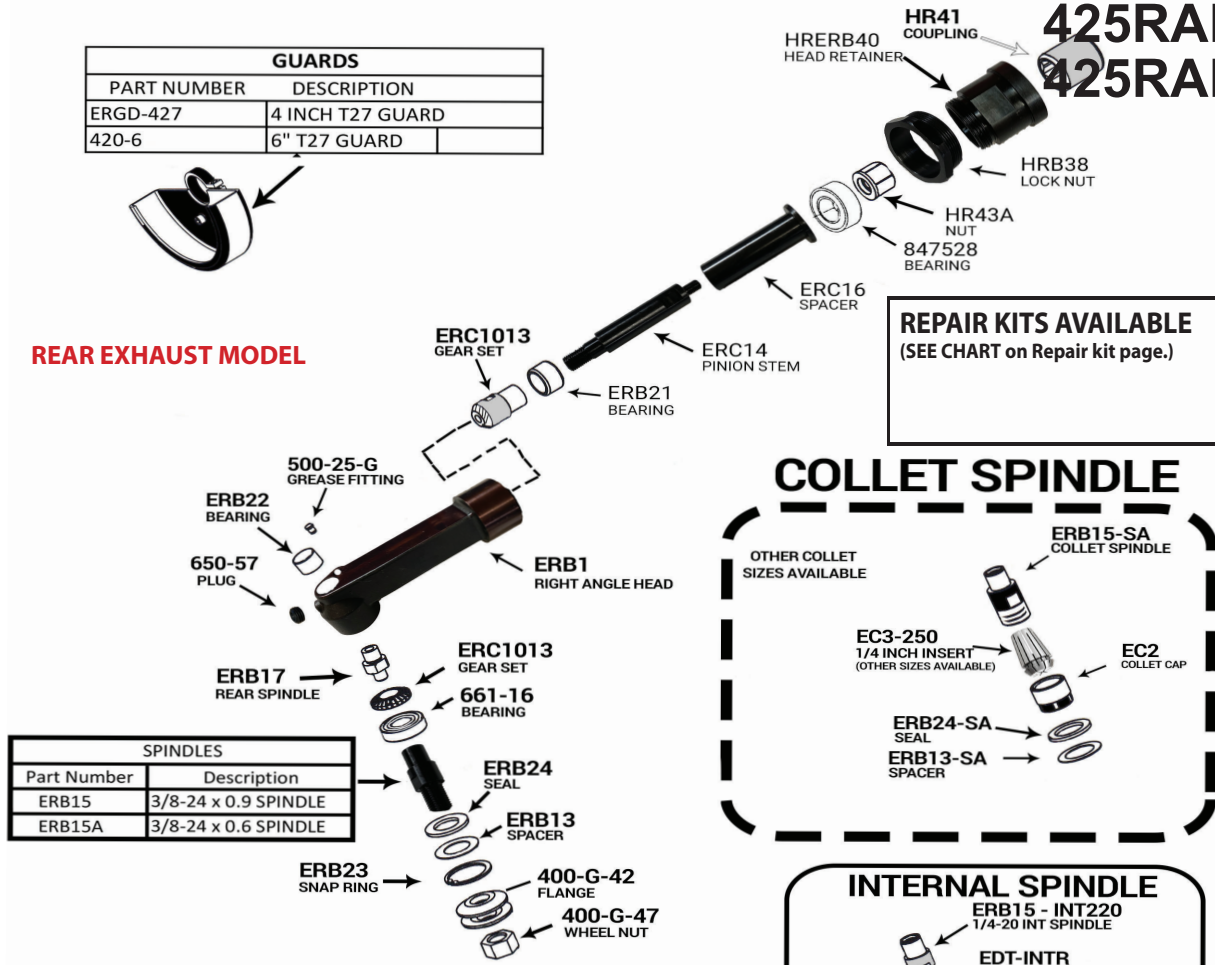
MODELS
420RA4R
420RARS
420RARD
425RA4R
425RARS
425RARD

REAR EXHAUST MODEL

GUARDS	
PART NUMBER	DESCRIPTION
ERGD-427	4 INCH T27 GUARD
420-6	6" T27 GUARD

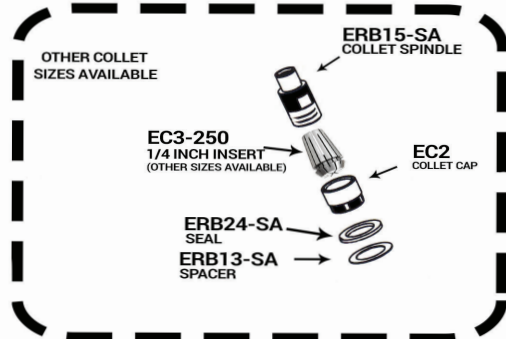


REAR EXHAUST MODEL



REPAIR KITS AVAILABLE
 (SEE CHART on Repair kit page.)

COLLET SPINDLE

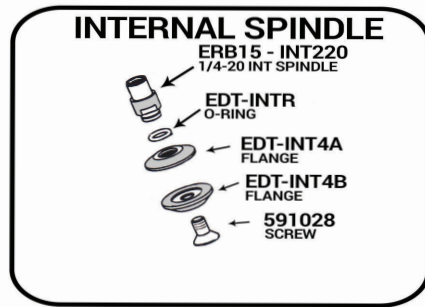


SPINDLES	
Part Number	Description
ERB15	3/8-24 x 0.9 SPINDLE
ERB15A	3/8-24 x 0.6 SPINDLE

TYPE 27 WHEEL ADAPTERS		
PART NUMBER	SPINDLE	TYPE 27 WHEEL SIZE
490-KR	3/8-24 x 0.6	4 INCH (3/8 ID)
490-KR	3/8-24 x 0.9	4 INCH (3/8 ID)
ADT27-354	3/8-24 x 0.9	4 INCH (5/8 ID)



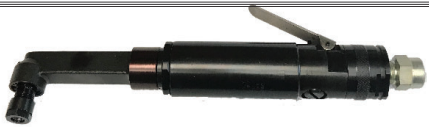
TOOL OUTPUT	WRENCH SIZE	PART NUMBER
INTERNAL THREAD	10 MM	1100-039
3/8-24 SPINDLE	7/16 INCH	1100-044
	9/16 INCH	1100-056
COLLET	1/2 INCH	1100-050
	5/8 INCH	1100-063



REAR EXHAUST MODEL

REAR EXHAUST MODEL

General Operators Instructions and Service Manual



Model 420RARD Rear Exhaust Angle grinder with Erickson style collet for use with carbide burrs, etc.



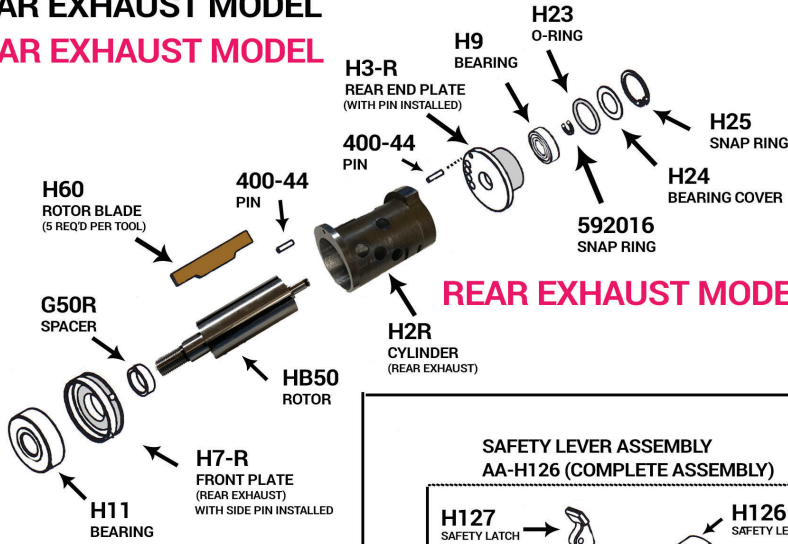
Model 420RA4R Rear exhaust angle grinder with 4" wheel guard.

MODELS
420RA4R
420RARS
420RARD
425RA4R
425RARS
425RARD

REAR EXHAUST MODEL

REPAIR KITS AVAILABLE
 (SEE CHART on Repair kit page.)

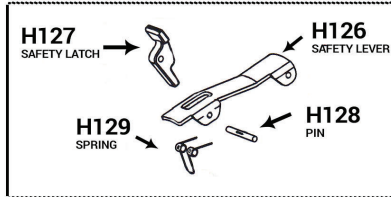
REAR EXHAUST MODEL
REAR EXHAUST MODEL



REAR EXHAUST MODEL

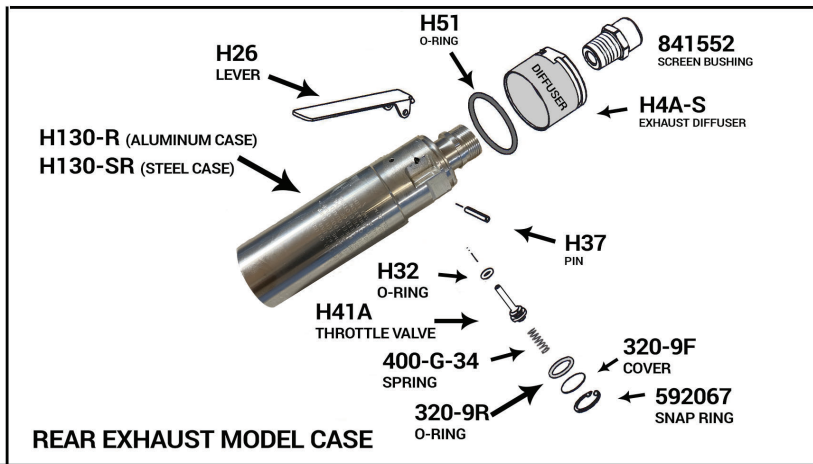
REAR EXHAUST MODEL

SAFETY LEVER ASSEMBLY
AA-H126 (COMPLETE ASSEMBLY)



REAR EXHAUST MODEL

REAR EXHAUST MODEL



REAR EXHAUST MODEL CASE

REPAIR KITS AVAILABLE
 (SEE CHART on Repair kit page.)

REAR EXHAUST MODEL

REAR EXHAUST HOSE



HENRY TOOLS, INC. Ph: (216) 291-1011 or (800) 826-5257



Model 420RARD Rear Exhaust Angle grinder with Erickson style collet for use with carbide burrs , etc.



Model 420RA4R Rear exhaust angle grinder with 4" wheel guard.

MODELS
420RA4R
420RARS
420RARD
425RA4R
425RARS
425RARD

REPAIR KIT PAGE

PART NUMBER	DESCRIPTION
510284	MOTOR REPAIR KIT (420RA & 425RA Grinders)
510330	420 RA HEAD REPAIR KIT (SPINDLE)
510332	420 RA HEAD REPAIR KIT (COLLET)

REAR EXHAUST MODEL

510284 REPAIR KIT (420 RA HEAD) Includes the following:

QTY	PART NUMBER	DESCRIPTION
1	H11	FRONT BEARING
5	H60	ROTOR BLADE
1	H9	REAR BEARING
1	592016	SNAP RING
1	H23	O-RING
1	H25	SNAP RING
1	H32	O-RING

510332 REPAIR KIT (Collet Spindle) Includes the following:

QTY	PART NUMBER	DESCRIPTION
1	ERB22	BEARING
1	661-16	BEARING
1	ERB-23	RETAINING RING
1	ERB13-SA	BEARING SHIELD
1	ERB24-SA	SHIELD
1	ERB21	BEARING
1	847528	BEARING

510330 REPAIR KIT (MOTOR REPAIR KIT) Includes the following :

QTY	PART NUMBER	DESCRIPTION
1	ERB22	BEARING
1	661-16	BEARING
1	ERB-23	RETAINING RING
1	ERB13	BEARING SHIELD
1	ERB24	SHIELD
1	ERB21	BEARING
1	847528	BEARING

CASE ASSEMBLIES (COMPLETE)

PART NUMBER	CASE MATERIAL	LEVER TYPE
AA-H-130-R-L	Aluminum	Standard Lever
AA-H130-R-K	Aluminum	Standard Lever
AA-H-130-R-S-L	Steel	Standard Lever
AA-H-130-R-S-K	Steel	Safety Lever

REPAIR KIT PAGE