

HENRY AIRTOOLS

American Made Industrial Tools

General Safety and Maintenance Manual

MODELS
420RA4S
420RA4SK
420RADS



**SIDE EXHAUST 1.2 HP
 ANGLE GRINDER**

**SIDE EXHAUST 1.2 HP
 ANGLE GRINDER**

**SIDE EXHAUST 1.2 HP
 ANGLE GRINDER**

**SIDE EXHAUST 1.2 HP
 ANGLE GRINDER**

**SIDE EXHAUST 1.2 HP
 ANGLE GRINDER**



Model Number	Exhaust Direction	Throttle Type	Speed	Power Output	Weight		Overall Length	Housing Diameter	Working Air Consumption	Spindle Thread & Length/Output	Wheel Aluminum Steel Capacity
					Alum. CASE	STEEL CASE					
420RA4S;13000;427 (4" Guard)	SIDE	(L) Lever or (K) Safety Lever	13000 R.P.M. (Standard)	1.2 H.P. (900 W)	3.1 Lbs. (1.4 Kg)	3.5 Lbs. (1.6 Kg)	9.8 Inch (249 mm)	1.6 Inch (41 mm)	25 cfm (11.8 L/S)	3/8-24 x 0.98 Inch (25 mm)	4 inch (100 mm), 6 inch (150 mm)
420RA6S;13000;627 (6" Guard)										3/8-24 x 0.6 Inch	
420RAD (Erickson collet)					ERICKSON COLLET	1/4 Inch Burrs/Mounted Points					
420RA-INT (Internal Thread mounting)					INTERNAL THREAD MOUNTING	Burrs/Mounted points Matching the Insert Size					

THE HENRY TOOL CO., MANUFACTURED BY HENRY TOOLS

498 SO. BELVOIR BLVD., SOUTH EUCLID, OH 44121 U.S.A.

PH: (216) 291-1011 OR (800) 826-5257 • FAX: (216) 291-5949 OR (800) 303-2800

EMAIL: DAVIIDH@MSN.COM • WEBSITE: WWW.HENRYTOOLS.COM

MODELS
420RA4S
420RA4SK
420RADS

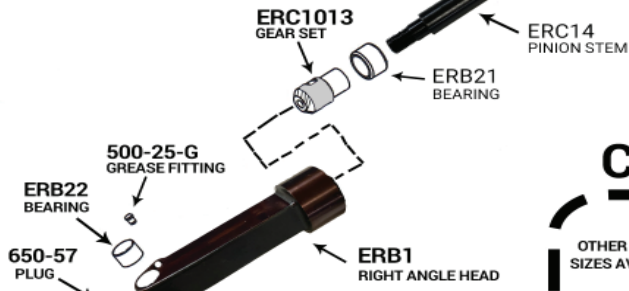


SIDE EXHAUST 1.2 HP
ANGLE GRINDER

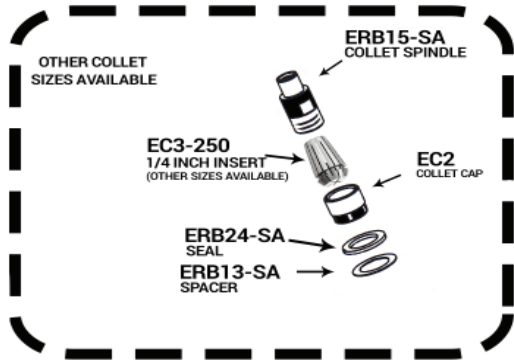
GUARDS	
PART NUMBER	DESCRIPTION
ERGD-427	4 INCH T27 GUARD
420-6	6" T27 GUARD



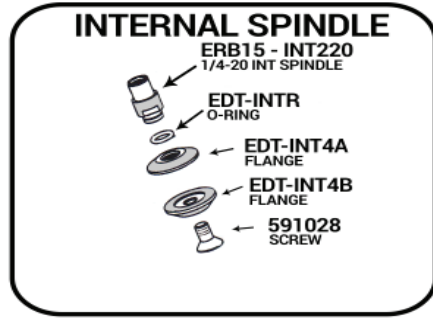
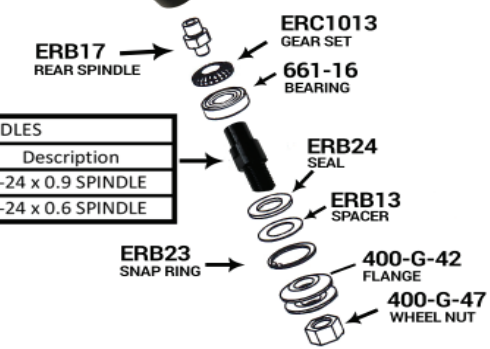
SIDE EXHAUST 1.2 HP
ANGLE GRINDER



COLLET SPINDLE



SPINDLES	
Part Number	Description
ERB15	3/8-24 x 0.9 SPINDLE
ERB15A	3/8-24 x 0.6 SPINDLE



TYPE 27 WHEEL ADAPTERS		
PART NUMBER	SPINDLE	TYPE 27 WHEEL SIZE
490-KR	3/8-24 x 0.6	4 INCH (3/8 ID)
490-KR	3/8-24 x 0.9	4 INCH (3/8 ID)
ADT27-354	3/8-24 x 0.9	4 INCH (5/8 ID)



TOOL OUTPUT	WRENCH SIZE	PART NUMBER
INTERNAL THREAD	10 MM	1100-039
3/8-24 SPINDLE	7/16 INCH	1100-044
	9/16 INCH	1100-056
COLLET	1/2 INCH	1100-050
	5/8 INCH	1100-063

SIDE EXHAUST 1.2 HP
ANGLE GRINDER

HENRY TOOLS, INC. Ph: (216) 291-1011 or (800) 826-5257

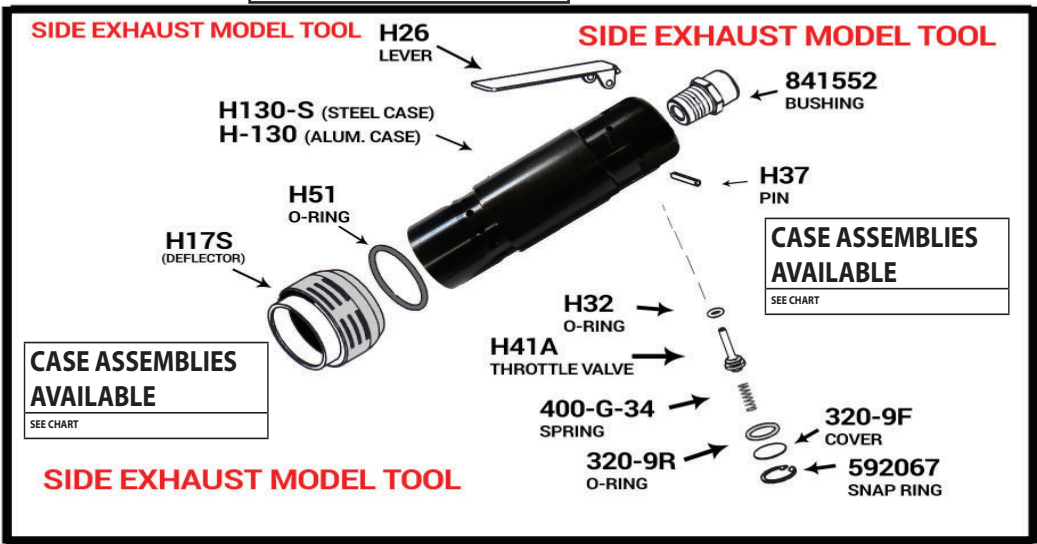
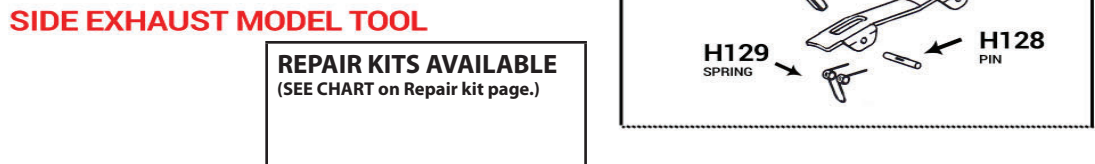
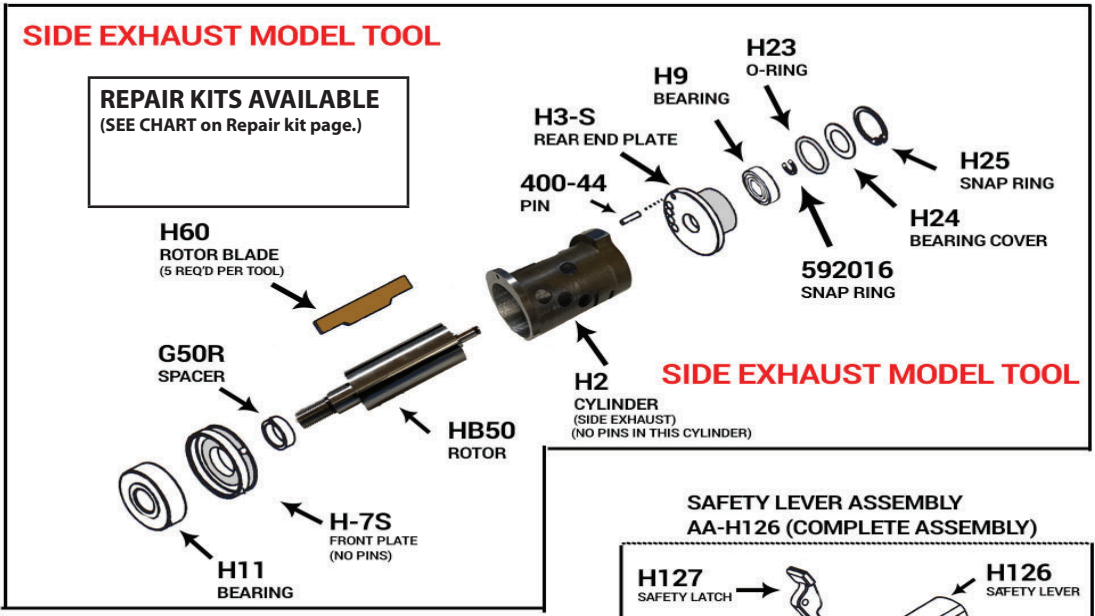


Model 420RA4S SIDE exhaust angle grinder with 6" Guard



Model 420RA4S SIDE exhaust angle grinder with 4" Guard

MODELS
420RA4S
420RA4SK
420RADS
425RA





Model 420RA4S SIDE exhaust angle grinder with 6" Guard



Model 420RA4S SIDE exhaust angle grinder with 4" Guard

MODELS
420RA4S
420RA4SK
420RADS
425RA

REPAIR KIT PAGE

PART NUMBER	DESCRIPTION
510284	MOTOR REPAIR KIT (420RA & 425RA Grinders)
510330	420 RA HEAD REPAIR KIT (SPINDLE)
510332	420 RA HEAD REPAIR KIT (COLLET)

510284 REPAIR KIT (420 RA HEAD) Includes the following:

QTY	PART NUMBER	DESCRIPTION
1	H11	FRONT BEARING
5	H60	ROTOR BLADE
1	H9	REAR BEARING
1	592016	SNAP RING
1	H23	O-RING
1	H25	SNAP RING
1	H32	O-RING

510332 REPAIR KIT (Collet Spindle) Includes the following:

QTY	PART NUMBER	DESCRIPTION
1	ERB22	BEARING
1	661-16	BEARING
1	ERB-23	RETAINING RING
1	ERB13-SA	BEARING SHIELD
1	ERB24-SA	SHIELD
1	ERB21	BEARING
1	847528	BEARING

510330 REPAIR KIT (MOTOR REPAIR KIT) Includes the following :

QTY	PART NUMBER	DESCRIPTION
1	ERB22	BEARING
1	661-16	BEARING
1	ERB-23	RETAINING RING
1	ERB13	BEARING SHIELD
1	ERB24	SHIELD
1	ERB21	BEARING
1	847528	BEARING

CASE ASSEMBLIES (COMPLETE)

PART NUMBER	CASE MATERIAL	LEVER TYPE
AA-H-130-L	Aluminum	Standard Lever
AA-H130-K	Aluminum	Standard Lever
AA-H-130-S-L	Steel	Standard Lever
AA-H-130-S-K	Steel	Safety Lever

HENRY TOOLS, INC. Ph: (216) 291-1011 or (800) 826-5257

General Operators Instructions and Service Manual



Model 420RA4S SIDE exhaust angle grinder with 6" Guard



Model 420RA4S SIDE exhaust angle grinder with 4" Guard

MODELS 420RA4S 420RA4SK 420RADS 425RA

PART NUMBER	DESCRIPTION
592067	SNAP RING (420RA Angle Grinder Part)
841552	SCREEN BUSHING
329-9F	COVER (Valve cover)
400-44	PIN
400-G-34	SPRING
592016	SNAP RING
AA-H126	SAFETY LOCK LEVER (COMPLETE ASSEMBLY)
G50R	SPACER (420RA Angle Grinder Part)
H11	BEARING (420RA Angle Grinder Part)
H126	SAFETY LEVER (Bare)
H127	SAFETY LATCH
H128	PIN
H129	SPRING
H-130	ALUMINUM CASE (420RA Angle Grinder Part)(SIDE EXHAUST)
H130-S	STEEL CASE (420RA Angle Grinder Part)(SIDE EXHAUST)
H175	DEFLECTOR (420RA Angle Grinder Part)(SIDE EXHAUST)
H2	CYLINDER (420RA Angle Grinder Part)(Side Exhaust)(NO PINS)
H-75	FRONT END PLATE (420RA ANGLE GRINDER Part) (SIDE EXHAUST)
H23	O-RING (420RA Angle Grinder Part)
H23	O-RING (420RA Angle Grinder Part)
H24	BEARING COVER (420RA Angle Grinder Part)
H25	SNAP RING (420RA Angle Grinder Part)
H26	LEVER (Standard Lever)
H32	O-RING (420RA Angle Grinder Part)
H37	PIN (Roll Pin)
H3-S	REAR END PLATE (420RA Angle Grinder Part)(SIDE EXHAUST) (with Pin installed)
H41A	THROTTLE VALVE (420RA ANGLE GRINDER PART) (SIDE EXHAUST)
H51	O-RING (420RA Angle Grinder Part)
H60	ROTOR BLADE (5 are Req'd per tool)(420RA Angle Grinder Part)
H9	BEARING (420RA Angle Grinder Part)
HB50	ROTOR (420RA Angle Grinder Part)
ERGD-427	4 INCH GUARD (T27) (420RA Angle Grinder Part)
420-6	6 INCH GUARD (T27) (420RA Angle Grinder Part)
650-57	PLUG
ERB21	BEARING (420RA Angle Grinder Part)
500-25-G	GREASE FITTING (420RA Angle Grinder Part)
ERC1013	GEAR SET (420RA Angle Grinder Part)

PART NUMBER	DESCRIPTION
ERB22	BEARING (420RA Angle Grinder Part)
ERC14	PINION STEM (420RA Angle Grinder Part)
ERC16	SPACER (420RA Angle Grinder Part)
847528	BEARING (420RA Angle Grinder Part)
HR43A	NUT (420RA Angle Grinder Part)
HRB38	LOCK NUT (420RA Angle Grinder Part)
HRERB40	HEAD RETAINER (420RA Angle Grinder Part)
HR41	COUPLING (420RA Angle Grinder Part)
ERB1	RIGHT ANGLE HEAD (420RA Angle Grinder Part)
ERB17	REAR SPINDLE (420RA Angle Grinder Part)
661-16	BEARING (420RA Angle Grinder Part)
ERB15	3/8-24 x 0.9 Spindle (420RA Angle Grinder Part)
ERB15A	3/8-24 x 0.6 SPINDLE (420RA Angle Grinder Part)
ERB24	SEAL (420RA Angle Grinder Part)
ERB13	SPACER (420RA Angle Grinder Part)
ERB23	SNAP RING (420RA Angle Grinder Part)
400-G-42	FLANGE
400-G-47	WHEEL NUT
490-KR	WHEEL ADAPTOR 3/8-24 x 0.6 (4 INCH (3/8 ID)
ADT27-354	WHEEL ADAPTER 3/8-24 x 0.9 (4 INCH (5/8 ID)
ERB15-SA	COLLET SPINDLE (420RA Angle Grinder Part)
EC3-250	1/4" INSERT (420RA Angle Grinder Part)
EC2	COLLET CAP NUT (420RA Angle Grinder Part)
ERB24-SA	SEAL (420RA Angle Grinder Part)
ERB13-SA	SPACER (420RA Angle Grinder Part)
ERB15-INT220	1/4-20 INT SPINDLE (420RA Angle Grinder Part)
EDT-INTR	O-RING (420RA Angle Grinder Part)
EDT-INT4A	TOP FLANGE (420RA Angle Grinder Part)
ED-INT-4B	BOTTOM FLANGE (420RA Angle Grinder Part)
591028	SCREW
1100-039	10 MM Wrench
1100-044	7/16" WRENCH
1100-056	9/16" WRENCH
1100-050	1/2" WRENCH
1100-063	5/8" WRENCH
510284	MOTO REPAIR KIT (420RA & 425RA Angle Grinder)
510330	HEAD REPAIR KIT (SPINDLE TYPE) (420RA & 425RA Angle Grinder)
510332	HEAD REPAIR KIT (COLLET TYPE) (420RA & 425RA ANGLE GRINDER)