

# HENRY TOOLS

Industrial Airtools at Work

Models  
N-16X  
N-16R  
N-16T



## General Safety and Maintenance Manual



Model Number	Exhaust Direction	Tool Nose	Bore and Stroke	Weight	Length	Diameter	Air Consumption
N-16X	Side Exhaust	0.401	.63 Inch x	3.5 Lb. (1.6 Kg)	8.5 Inches (216 mm)	1.7 Inches (43 mm)	15 cfm (7.1 L/S)
N-16R	Side Exhaust	Round or 0.371 Hex	1.44 Inch (16 mm x 37 mm)				

**THE HENRY TOOL CO., MANUFACTURED BY HENRY TOOLS**

498 So. Belvoir Blvd., South Euclid, OH 44121 U.S.A.

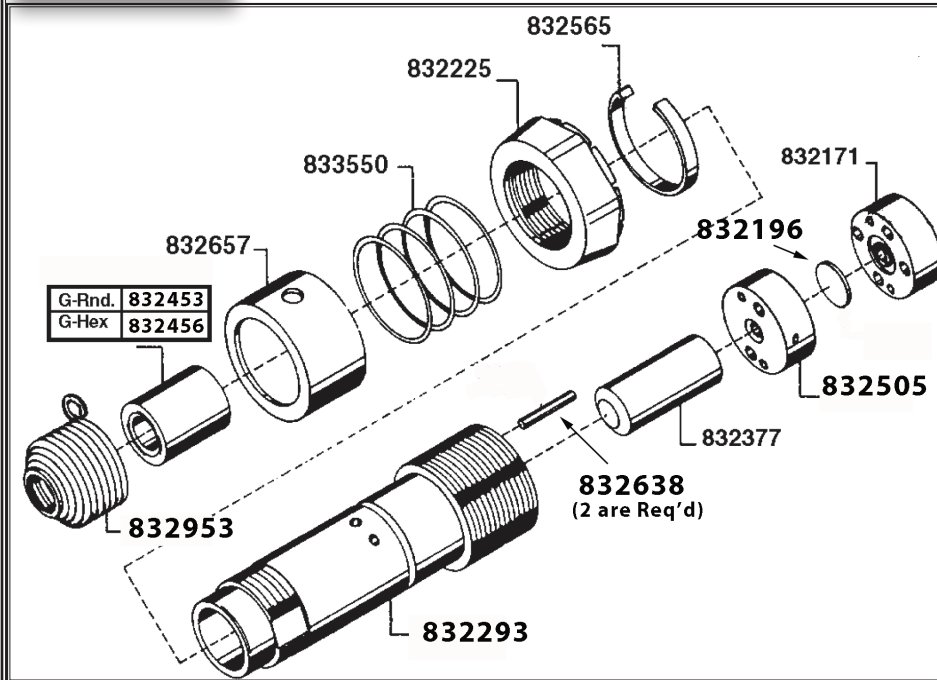
Ph: (216) 291-1011 or (800) 826-5257 • Fax: (216) 291-5949 or (800) 303-2800

Email: [daviidh@msn.com](mailto:daviidh@msn.com) • Website: [www.Henrytools.com](http://www.Henrytools.com)

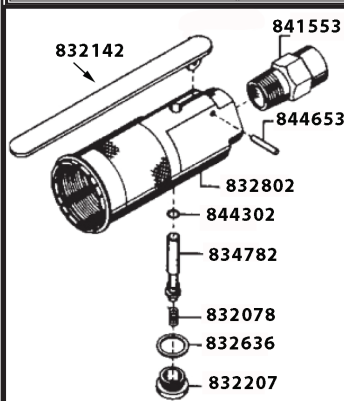
# General Operators Instructions and Service Manual



Models  
N-16X  
N-16R  
N-16T



Genuine Henry Tool Parts	
PART NUMBER	DESCRIPTION
832636	GASKET
832638	VALVE BLOCK PIN
832657	EXHAUST DEFLECTOR
832802	BACKHEAD
832953	RETAINER
833550	EXHAUST DEFLECTOR SPRING
834782	VALVE
841553	SCREEN BUSHING
844302	O-RING
844653	LEVER PIN



Genuine Henry Tool Parts	
PART NUMBER	DESCRIPTION
832196	VALVE
832207	CAP SCREW
832225	LOCK RING
832293	BARREL
832377	PLUNGER
832453	TOOL NOSE(G-Rnd.) (.401)OPTIONAL
832456	TOOL NOSE(G-Hex) (.371)OPTIONAL
832462	TAPER TOOL NOSE (.401)OPTIONAL
832505	VALVE BLOCK (Inc's 832638)
832565	HANDLE LOCKING CLIP



**CHISELS**

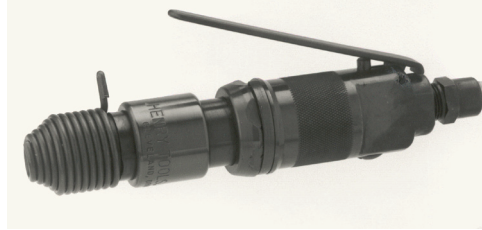
Genuine Henry Tool Parts	
PART NUMBER	DESCRIPTION
832078	SPRING
832142	LEVER
832171	VALVE BLOCK BUT-TON

Part No.	Description	Cutting Edge Width	Over-all Length	Shank Type
595001	Narrow	1/2"	7"	.401 Round Shank
595003	Narrow	1/2"	12"	.401 Round Shank
595004	Narrow	1/2"	18"	.401 Round Shank
595009	Narrow	1/2"	7"	.371 Hex Shank
596010	Narrow	1/2"	12"	.371 Hex Shank
596001	Narrow	1/2"	18"	.371 Hex Shank

**THE HENRY TOOL CO. MANUFACTURED BY HENRY TOOLS**  
498 So. Belvoir Blvd., South Euclid, OH 44121 U.S.A.  
Ph: (216) 291-1011 or (800) 826-5257 • Fax: (216) 291-5949 or (800) 303-2800  
Email: davidhdh@msm.com • Website: www.Henrytools.com

# General Operators Instructions and Service Manual

Models  
N-16X  
N-16R  
N-16T



Genuine Henry Tool Parts	
PART NUMBER	DESCRIPTION
832078	SPRING
832142	LEVER
832171	VALVE BLOCK BUTTON
832196	VALVE
832207	CAP SCREW
832225	LOCK RING
832293	BARREL
832377	PLUNGER
832453	TOOL NOSE(G-Rnd.)(.401)OPTIONAL
832456	TOOL NOSE(G-Hex)(.371)OPTIONAL
832462	TAPER TOOL NOSE (.401)OPTIONAL
832505	VALVE BLOCK(Inc's 832638)
832565	HANDLE LOCKING CLIP
832636	GASKET
832638	VALVE BLOCK PIN
832657	EXHAUST DEFLECTOR
832802	BACKHEAD
832953	RETAINER
833550	EXHAUST DEFLECTOR SPRING
834782	VALVE
841553	SCREEN BUSHING
844302	O-RING
844653	LEVER PIN

the air control valve. Never kink hose to stop air flow.

E. Wear suitable goggles, mask, protective clothing or safety devices.

F. Never use air to blow dust or chips from the hair, clothing, or safety devices.

G. Never point the hose at anyone. Practical jokes with compressed air have caused many serious injuries.

H. When using compressed air, see that no nearby workers are in line of airflow.

I. All compressed air supplies used for blowing must be equipped with 30 p.s.i. regulators.

J. If working with or near compressed air tools, wear goggles. Never point the tool or air hose at any person.

1. Before starting work, learn what is underneath the surface. If gas pipe, electric conduit, sewers, water mains, or other objects are in the area, get definite information of their location (blueprints, if possible) and avoid them carefully.

2. Wear safety shoes, goggles, and hard hats at all times.

Also, wear ear protection.

3. Inspect the machine and equipment regularly, especially drill steel. Never use defective equipment.

4. Check valves and connections carefully. Be especially careful when laying down the tool so that the trigger cannot be operated accidentally.

5. Thoroughly examine the slope and flare for loose rock.

6. Keep a good grip and watch your footing when tool is in use.

7. **NEVER POINT A PORTABLE POWER HAMMER AT ANYONE.**

8. Before disconnecting a portable pneumatic tool, always turn the air off at the base control valve.

9. If the job is near a sidewalk or other thoroughfare, place suitable screens to protect passersby from flying particles.

### PERSONAL PROTECTION

There is no personal protective equipment that has proved to be effective against HAVS in stonemasons' yards. Anti-vibration gloves may be beneficial in keeping hands warm but they are generally not effective at reducing vibration at the low frequencies which are important in the development of VWF.

However, it is important to keep hands warm, as this increases blood flow. This can be done by wearing

thermal gloves and providing localised heating and rest breaks in cold conditions for workers to exercise and keep their hands warm. Exercising hands and fingers

10. Never use compressed air to blow dirt, dust, or chips from hands, face, or clothing.

### When using compressed air

A. Use only sound, strong hose with secure couplings and connections.

B. Be sure there are no sharp points on metal hose parts.

C. Close the control valve in portable pneumatic tools before turning on air.

D. Before changing one pneumatic tool for another, turn off