

HENRY TOOLS

Industrial Airtools at Work

MODELS
3917GHLS



General Safety and Maintenance Manual



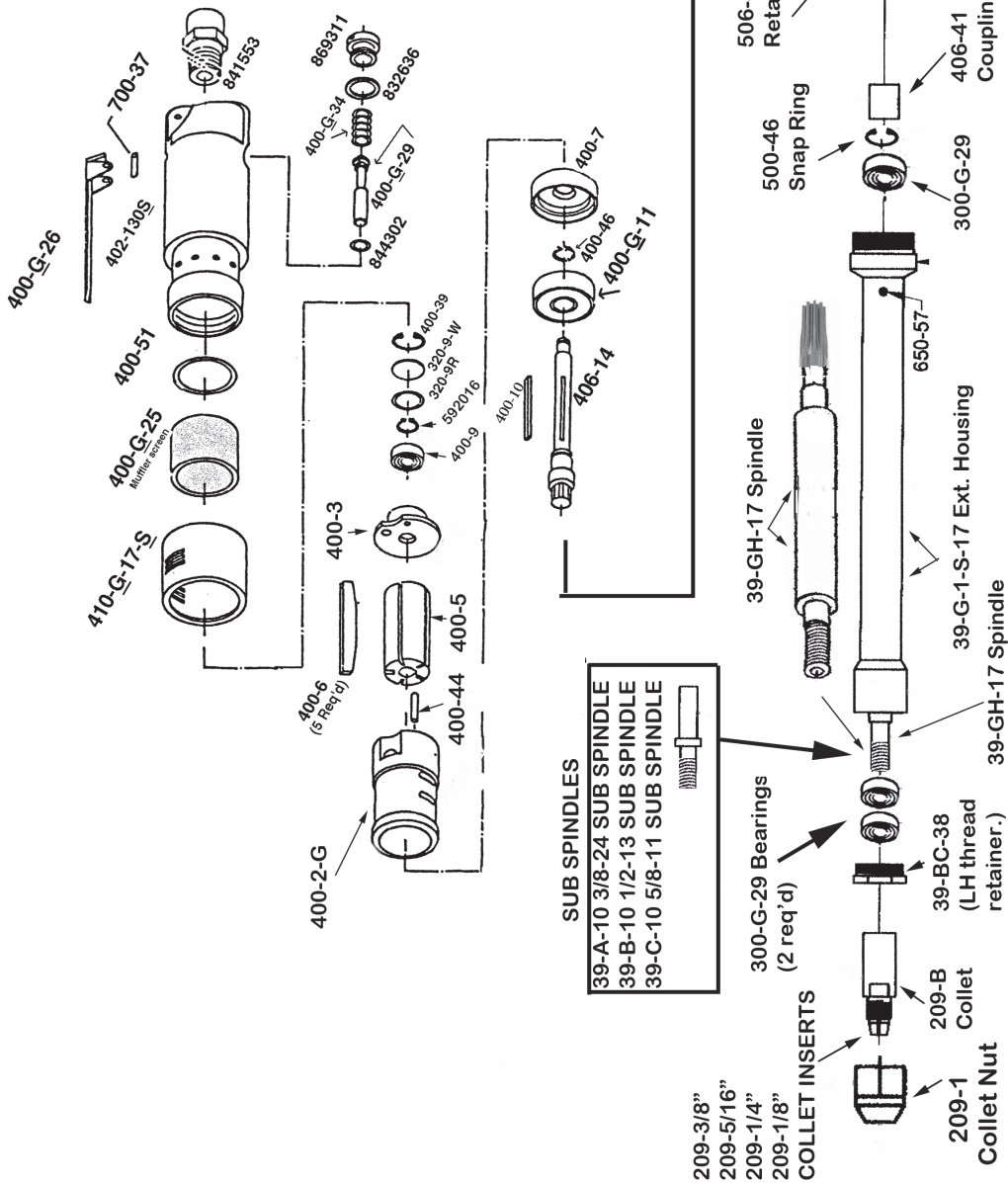
Model Number	Exhaust Direction	Throttle Type	Speed	Power Output	Case Material	Weight		Length	Diameter Front Housing	Air Consumption	Wheel Capacity
						Steel					
3917GHLS	Side (Side is Standard)	(L) Lever or (K) Safety Lever	15000 to 22000 R.P.M. (18000RPM is Standard)	0.9 H.P. 675 W	Steel	4 lbs., 1.82kg	17" 431mm	1.120" 2.5cm	25cfm 11.8 L/S	Burrs/Mounted Stones of shank size 1/4 Inch, 3/8 Inch (with appropriate collet). Any Type 16, 17, 17R, 18 or 18R Cone Wheels w/ 3/8-24 or 5/8-11 or 1/2-13 Mounting.	

THE HENRY TOOL CO., MANUFACTURED BY HENRY TOOLS

498 So. Belvoir Blvd., South Euclid, OH 44121 U.S.A.

Ph: (216) 291-1011 or (800) 826-5257 • Fax: (216) 291-5949 or (800) 303-2800

Email: daviidh@msn.com • Website: www.Henrytools.com



THE HENRY TOOL CO., MANUFACTURED BY HENRY TOOLS
 498 So. Belvoir Blvd., South Euclid, OH 44121 U.S.A.
 Ph: (216) 291-1011 or (800) 826-3572 • Fax: (216) 291-5949 or (800) 303-2800
 Email: davidh@hnt.com • Website: www.henrytools.com

General Operators Instructions and Service Manual

MODELS 3917GHLS

PART NUMBER	DESCRIPTION
592016	SNAP RING
832636	GASKET
841553	SCREENED BUSHING
844032	O-RING
869311	CAP SCREW
209-1	COLLET NUT
209-1/4	1/4" INSERT
209-1/8	1/8" INSERT
209-3/8	3/8" INSERT
209-5/16"	5/16" INSERT
209-B	COLLET BODY
300-G-29	BEARING
320-9R	RING SPACER
320-9-W	BEARING COVER
39-A-10	3/8-24 SUB SPINDLE
39-B-10	1/2-13 SUB SPINDLE
39-BC-38	RETAINER (LEFT HAND THREAD)
39-C-10	5/8-11 SUB SPINDLE
39-G-1-S-17	EXTENDED HOUSING
39-GH-17	SPINDLE
400-10	KEY
400-2G	CYLINDER
400-3	REAR ENDPLATE
400-39	SNAP RING
400-44	ROLL PIN
400-46	SNAP RING
400-5	ROTOR
400-51	O-RING
400-6	BLADE (5 REQ.)
400-7	FRONT ENDPLATE
400-9	REAR MOTOR BEARING
400-G-11	FRONT BEARING
400-G-26	THROTTLE LEVER
400-G-29	THROTTLE VALVE-INCLUDES 844302
400-G-34	SPRING
400-G-42	3/8-24 FLANGE (2"-3" WHEELS)
400-G-47	3/8-24 JAM NUT
402-126	SAFETY LEVER
402-127	SAFETY LEVER PIN
402-128	LOCKOUT LEVER
402-129	SAFETY LEVER SPRING
402-130	ALUMINUM CASE (SPECIFY SPEED)
402-130-S	STEEL CASE (SPECIFY SPEED)

402-134	MUFFLER
406-14	MOTOR SPINDLE
406-41	COUPLING
410-G-17-S	EXHAUST SLEEVE
500-46	SNAP RING
506-39	HOUSING RETAINER
650-57	