

# HENRY TOOLS

Industrial Airtools at Work

MODELS  
3927GHLS



## General Safety and Maintenance Manual



Model Number	Exhaust Direction	Throttle Type	Speed	Power Output	Case Material	Weight		Length	Diameter Front Housing	Air Consumption	Wheel Capacity
							Steel				
3927GHLS	Side (Side is Standard)	(L) Lever or (K) Safety Lever	15000 to 22000 R.P.M. (18000RPM is Standard)	0.9 H.P. 675 W	Steel				1.120" 2.5cm	25cfm 11.8 L/S	Burrs/Mounted Stones of shank size 1/4 Inch, 3/8 Inch (with appropriate collet). Any Type 16, 17, 17R, 18 or 18R Cone Wheels w/ 3/8-24 or 5/8-11 or 1/2-13 Mounting.

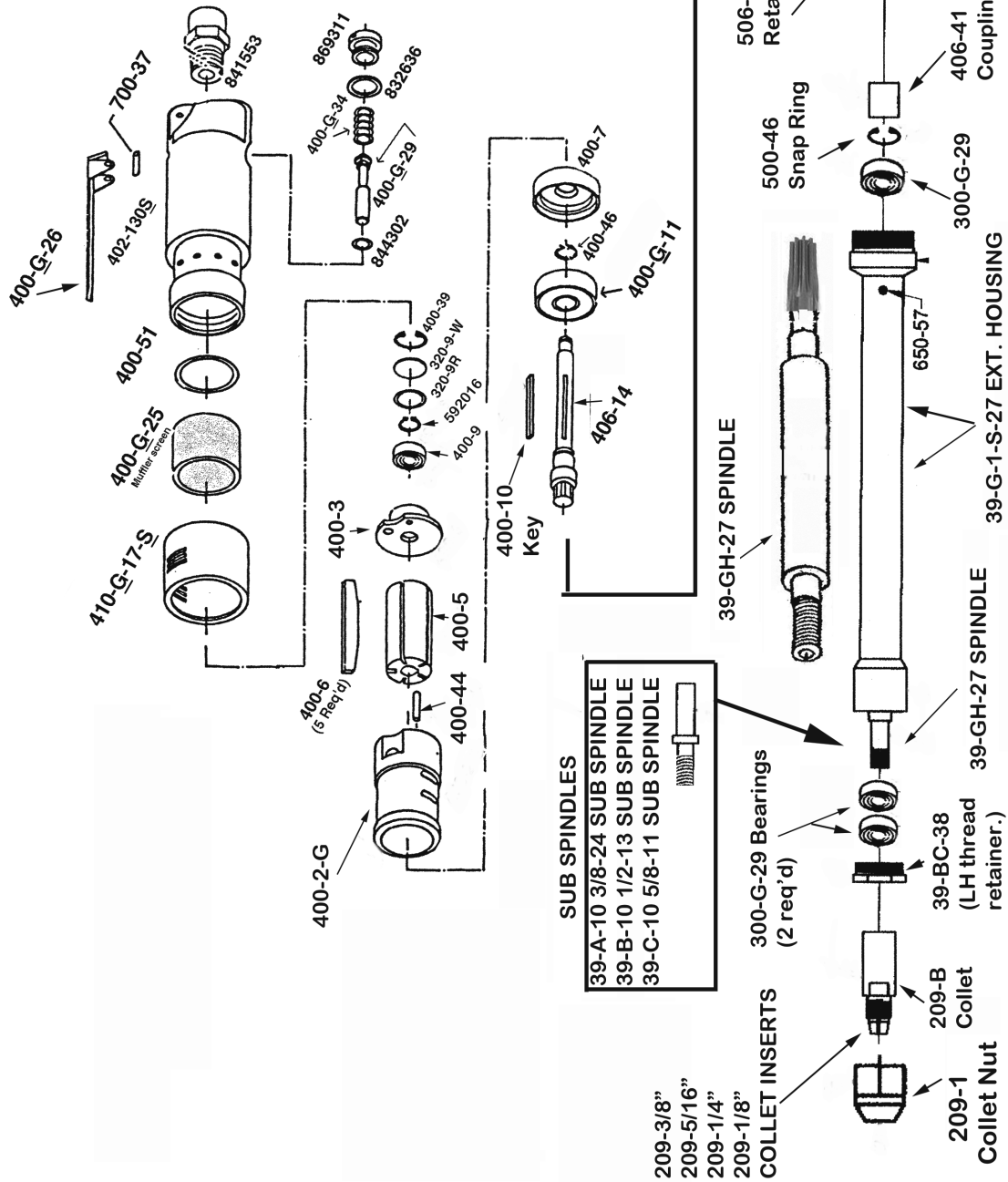
**THE HENRY TOOL CO., MANUFACTURED BY HENRY TOOLS**

498 So. Belvoir Blvd., South Euclid, OH 44121 U.S.A.

Ph: (216) 291-1011 or (800) 826-5257 • Fax: (216) 291-5949 or (800) 303-2800

Email: [daviidh@msn.com](mailto:daviidh@msn.com) • Website: [www.Henrytools.com](http://www.Henrytools.com)

**MODELS  
3927GHLS**



- 209-3/8"
- 209-5/16"
- 209-1/4"
- 209-1/8"

**COLLET INSERTS**

THE HENRY TOOL CO., MANUFACTURED BY HENRY TOOLS  
 498 So. Belvoir Blvd., South Euclid, OH 44121 U.S.A.  
 Ph: (216) 291-0111 or (800) 826-3557 • Fax: (216) 291-5949 or (800) 303-2800  
 Email: davidh@hntco.com • Website: www.HenryTools.com

