

# HENRY TOOLS

Industrial Airtools at Work

MODEL  
HT-4B20  
HT-4B30  
HT-4B40



## General Safety and Maintenance Manual



## 4 BOLT CHIPPING HAMMER SERIES



MODEL	BLOWS PER MINUTE	BORE AND STROKE	LENGTH	NET WEIGHT	AIR INLET	WORKING AIR CONSUMPTION
HT4B20	2400	1.1" x 2", 28.5mm x 50.8mm	14.4" 356mm	17.5 lbs 7.95 kg STEEL HANDLE	3/8" N.P.T.	33.92 CFM
HT4B30	1920	1.125" x 3.7", 28.5mm x 94 mm	15.8" 400mm	18.9 lbs 8.6 kg STEEL HANDLE	3/8" N.P.T.	33.21 CFM
HT4B40	1500	1.125" x 4.02", 28.5mm x 101.6mm	16.7" 425mm	19.6 lbs 8.9 kg	3/8" N.P.T.	30.39 CFM

**THE HENRY TOOL CO., MANUFACTURED BY HENRY TOOLS**

498 So. Belvoir Blvd., South Euclid, OH 44121 U.S.A.

Ph: (216) 291-1011 or (800) 826-5257 • Fax: (216) 291-5949 or (800) 303-2800

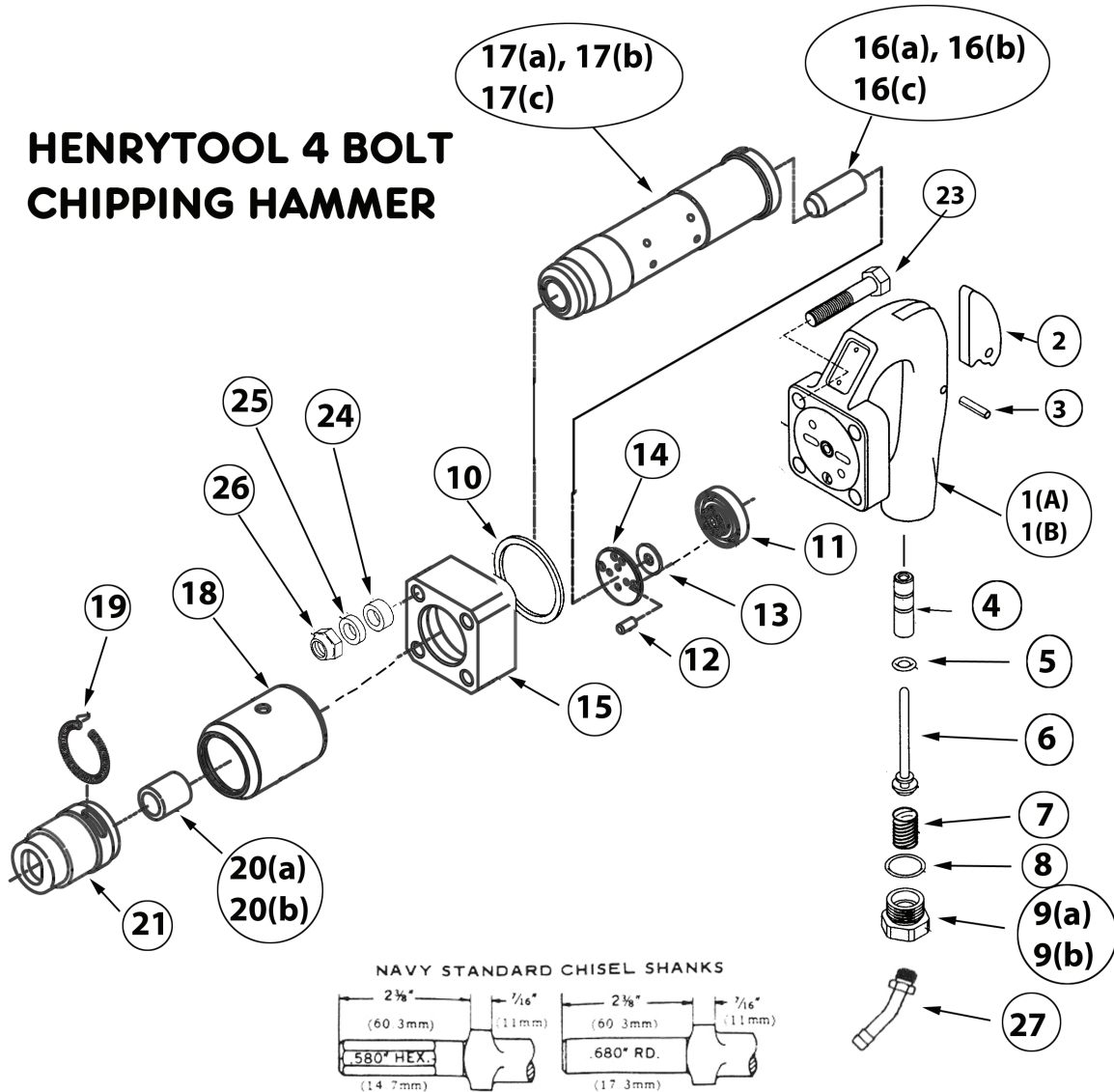
Email: [daviidh@msn.com](mailto:daviidh@msn.com) • Website: [www.Henrytools.com](http://www.Henrytools.com)



## 4 BOLT CHIPPING HAMMER SERIES

MODEL  
HT-4B20  
HT-4B30  
HT-4B40

### HENRYTOOL 4 BOLT CHIPPING HAMMER



ITEM NO.	PART NUMBER	DESCRIPTION
1(A)	250027-484	STEEL HANDLE (BARE)
1(B)	250027-484-AL	ALUMINUM HANDLE (BARE)
2	250027-486	TRIGGER (68722228)
3	ATP-0481	ROLL PIN
4	250027-487	VALVE STEM BUSHING (68722227)

ITEM NO.	PART NUMBER	DESCRIPTION
5	250027-431	O-RING (68CJ0181)
6	250027-488	T. VALVE w/O-RING (68722777)
7	250027-489	T. VALVE SPRING (68722775)
8	250027-490	O-RING (680J0018)



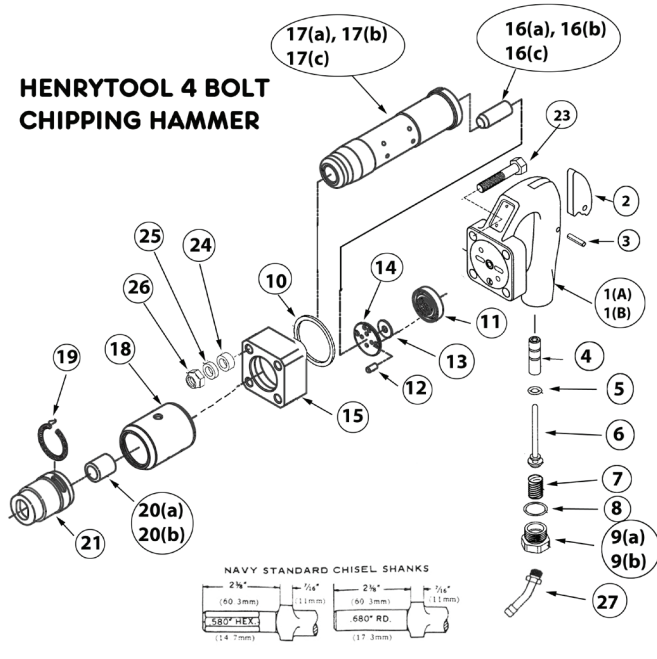
## 4 BOLT CHIPPING HAMMER SERIES

MODEL  
HT-4B20  
HT-4B30  
HT-4B40

Parts Listing (Continued)

ITEM NO.	PART NUMBER	DESCRIPTION
9(A)	250027-491	7/8" AIR INLET BUSHING (68722274)
9(B)	250027-492	3/8" AIR INLET BUSHING (68722224)
10	250027-493	ABSORBER RING (68723120)
11	250027-482	VALVE SEAT (68722230)
12	250027-481	DOWEL PIN (68VV5624)
13	250027-483	DISC VALVE (68722229)
14	250027-480	VALVE SEAT BUMPER (68722231)
15	250027-494	BARREL FLANGE (68722232)
16(A)	250027-500	#2 STROKE PISTON (68722311)
16(B)	250027-502	#3 STROKE PISTON (68722234)
16(C)	250027-505	#4 STROKE PISTON (68722308)
17(A)	250027-498	BARREL 2" STROKE (68723310)
17(B)	250027-501	BARREL 3" STROKE (68722234)
17(C)	250027-503	BARREL 4" STROKE (68722307)
18	250027-499	EXHAUST DEFLECTOR (68722451)
19	250012-529	RETAINER SPRING
20(a)	250039-952	ROUND TOOL NOSE BUSHING (.680) (68TB8230)
20(b)	250039-953	HEX TOOL NOSE BUSHING (.580" (68722759)
21	250012-525	RETAINER (6872122)
23	250027-485	HANDLE BOLT (68780097)(4 are Req'd)
24	250027-495	VIBRATION SPACER(FOR BOLT)(68722427)
25	250027-496	HANDLE BOLT SPACER (68722428)
26	250027-497	HANDLE BOLT NUT (68780097)
27	1080	SWIVEL HOSE BARB

### HENRYTOOL 4 BOLT CHIPPING HAMMER



### SAFETY FIRST

**READ AND UNDERSTAND ALL INSTRUCTIONS**

Failure to follow all instructions listed below, may result in accident, fire and/or personal injury.

### SAVE THESE INSTRUCTIONS

Be certain to wear safety equipment such as safety glasses and earplugs. Also, when changing the air hammer's bits, always be sure to disconnect air supply from air hammer first. When using an air hammer, always be aware of the position of the tool and work piece. The tremendous force that the air hammer exerts can cause the tool or work piece to jump powerfully. This movement could easily cause injury to the operator or bystanders.

Caution: Disassembly or reassembly of the unit must be performed by qualified personnel. It is advisable to return units to the factory or consult Henrytools for necessary repair.

1. Do not allow corrosive gases or foreign material to enter the unit.
2. Eye protection is ALWAYS required when running this chipping hammer.
3. Hearing protection is ALWAYS required when running a chipping hammer.
4. Dust mask, non-skid safety shoes, hard hat, gloves and other personal safety equipment must be used.
5. Stay alert, watch what you are doing, and use common sense when operating a power tool.

Henry Tools, Inc. Ph: (216) 291-1011 or (800) 826-5257





## 4 BOLT CHIPPING HAMMER SERIES

**MODEL**  
HT-4B20  
HT-4B30  
HT-4B40

### SAFETY (continued)

6. Dress properly. Do not wear any loose clothing or jewelry. These may get caught by moving parts. Make sure to wear a hair-net.
7. Keep your work area clean and well lit.
8. Do not operate power tools in explosive atmospheres, such as in the presence of flammable liquids, gases, or dust.
9. Disconnect the tool from the air supply before installing, making any adjustment, changing accessories, servicing or storing tool.

- There are several dangers associated with the use of pneumatic tools. First and foremost is the danger of getting hit by one of the tool's attachments.
- Pneumatic tools must be checked to see that the tools are fastened securely to the air hose to prevent them from becoming disconnected. A short wire or positive locking device attaching the air hose to the tool may also be used and will serve as an added safeguard.
- Eye protection is required, and head and face protection is recommended for individuals working with pneumatic tools. Screens must also be set up to protect nearby workers from being struck by flying fragments around pneumatic chippers.
- Compressed air guns should NEVER be pointed toward anyone.
- Disconnect tool from power supply when exchanging tool chisels or servicing the tool.

ing the tool.

- Keep your hands off the tooling used.
- Pay attention to possible abrupt movements of the machine due to reaction forces or breaking of used tooling or workpieces.
- Working with hammers may produce dust and depending on the material of the working surface this may be harmful for the operator's health.
- Personal protective devices and dust vacuum systems must be provided depending on the material of the work pieces / surfaces.
- Chiseling operations may cause fragmentation or even destruction of the work piece.
- The tooling of heavy-duty hammers such as concrete breakers is exposed to especially rough treatment and after some time of use may break due to fatigue.
- Insert tools improperly fastened or damaged may cause strong vibrations.
- The operator's incorrect body carriage will not allow a proper reaction to normal or unexpected

movements of the hammer. Make SURE to carry yourself so that you are even prepared for a possible breaking of the insert tool.

- Holding the hammer in the hand freely may lead to vibration injuries.
- The maximum operating pressure (flow pressure) must not be exceeded. A pressure regulator should be integrated so that the pressure will be adjusted before reaching the hammer.
- There is a risk of getting hurt by a whipping air hose - please pay careful attention.
- Do not run tools in the vicinity of inflammable liquids or gases.
- NEVER MODIFY ANY PART OF THIS TOOL. Modifying this tool can cause injury or death.

Part No.	Description	Cutting Edge Width	Pic	Overall Length	Shank Type
839008	Narrow	1"		9"	 .580 hex shank
839009	Narrow	1"		12"	
839010	Narrow	1"		18"	
839016	Wide	2"		12"	
839018	Moil Point	-		9"	 .680 Round shank
839014	Narrow	1"		9"	
839017	Wide	2"		9"	
839023	Moil Point	-		9"	
839045	Narrow	1"		18"	
839047	Wide	2"		12"	
839083	Narrow	1"		12"	