

HENRY AIRTOOLS

American Made Industrial Tools

MODELS 46 ARAD

General Safety and Maintenance Manual



Model Number	Exhaust Direction	Throttle Type	Speed	Power Output	Case Material
46 ARAD	Front or Side	(L) Lever or (K) Safety Lever	13000 to 14000 R.P.M (13500rpm is standard)	0.9 H.P. (675 W)	Steel or Aluminum

Weight		Length	Diameter	Air Consumption	Spindle Thread
Aluminum	Steel				
2.8 Lbs (1.3 Kg)	3.5 Lbs (1.6 Kg)	9.1 Inches (231 mm)	1.6 Inches (41 mm)	25 CFM (11.8 L/S)	ERICKSON COLLET FOR CARBIDE BURRS, ETC. 1/4 Inch Burrs/Mounted Points

THE HENRY TOOL CO., MANUFACTURED BY HENRY TOOLS

498 SO. BELVOIR BLVD., SOUTH EUCLID, OH 44121 U.S.A.

PH: (216) 291-1011 OR (800) 826-5257 • FAX: (216) 291-5949 OR (800) 303-2800

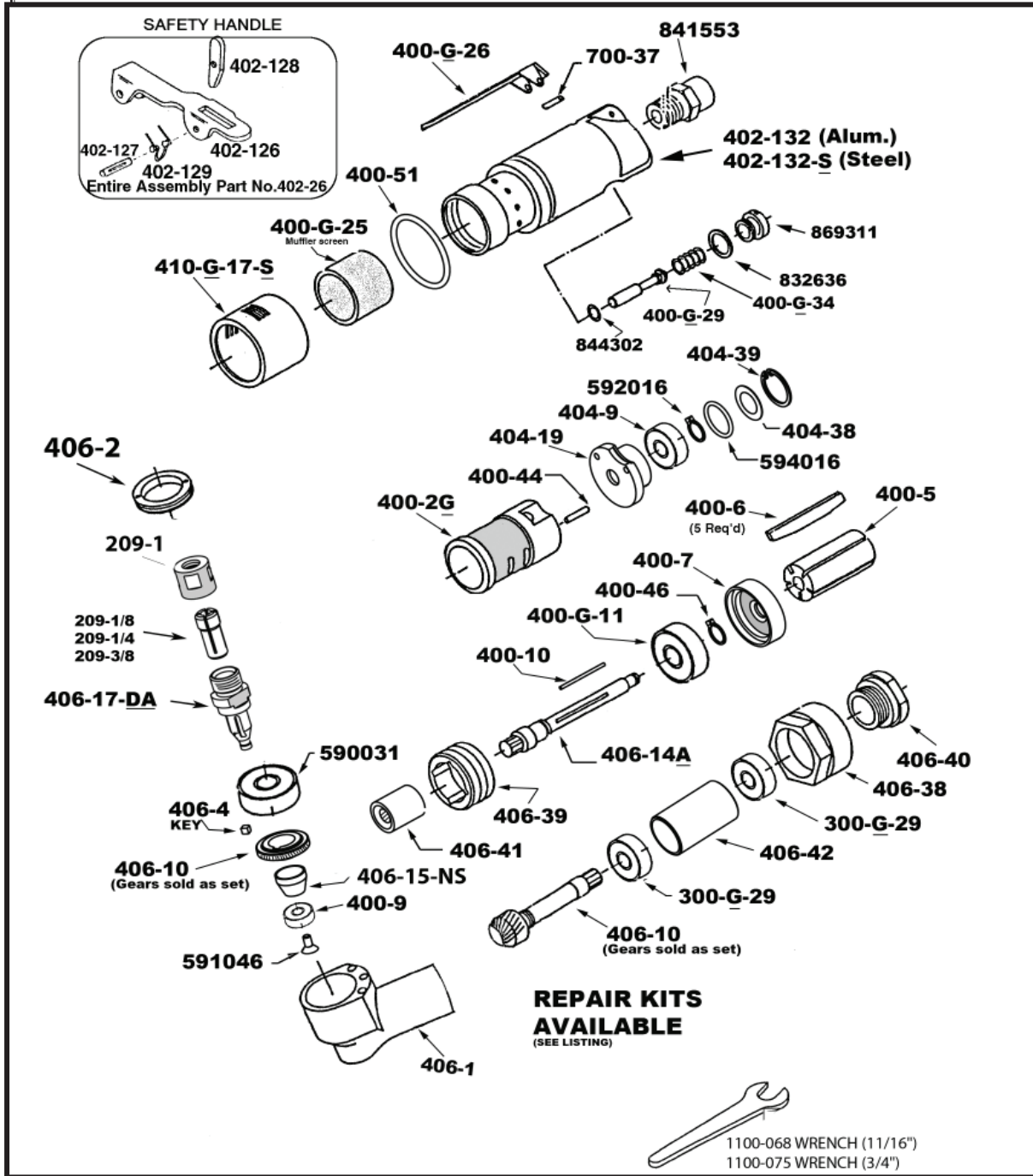
EMAIL: DAVIIDH@MSN.COM • WEBSITE: WWW.HENRYTOOLS.COM

General Operators Instructions and Service Manual



**MODELS
46 ARAD**

Model 46ARAD Angle Grinder featuring an Erickson style collet for carbide burrs, etc.



General Operators Instructions and Service Manual

MODELS 46 ARAD



Model 46ARAD Angle Grinder featuring an Erickson style collet for carbide burrs, etc.

PART NUMBER	DESCRIPTION
209-1	ERICKSON STYLE COLLET NUT
209-1/8	1/8" COLLET INSERT
209-1/4	1/4" COLLET INSERT
209-5/16	5/16" COLLET INSERT
209-3/8	3/8" COLLET INSERT
209-1/4	1/4" COLLET INSERT
300-G-29	BEARING
400-G-11	FRONT BEARING
400-G-25	MUFFLER SCREEN
400-G-26	THROTTLE LEVER
400-G-29	THROTTLE VALVE-INCLUDES 844302
400-G-34	SPRING
400-2G	CYLINDER
400-5	ROTOR
400-6	BLADE (5 ARE REQ.)

PART NUMBER	DESCRIPTION
400-7	FRONT ENDPLATE
400-9	REAR BEARING
400-10	KEY
400-44	CYLINDER ROLL PIN
400-46	SNAP RING
400-51	O-RING
402-126	SAFETY LEVER BARE
402-127	SAFETY LEVER PIN
402-128	LOCKOUT LEVER FOR SAFETY LEVER
402-129	SAFETY LEVER SPRING
402-132	ALUMINUM CASE (SPECIFY SPEED)
402-132-S	STEEL CASE (SPECIFY SPEED)
402-132-S-FT	STEEL FLOW THRU CASE
404-9	REAR MOTOR BEARING
404-19	REAR ENDPLATE
404-38	BEARING COVER
404-39	SNAP RING
406-1	OUTPUT HOUSING (MAIN HEAD UNIT)
406-4	KEY
406-10	GEAR SET (SOLD AS SET)
406-14A	MOTOR SPINDLE
406-15	GEAR SPACER
406-17-DA	ERICKSON COLLET SPINDLE
406-38	LOCKNUT

PART NUMBER	DESCRIPTION
406-39	MOTOR RETAINER
406-40	HEAD RETAINER NUT
406-41	COUPLING
410-G-17F-S	STEEL FRONT EXHAUST SLEEVE
410-G-17-S	STEEL SIDE EXHAUST SLEEVE (STANDARD)
700-37	THROTTLE LEVER PIN
590031	BEARING
591046	SCREW
592016	SNAP RING
594016	O-RING
832636	GASKET
841552	3/8 NPT TO 3/8 NPT BUSHING
841553	3/8 NPT TO 1/4 NPT BUSHING(STANDARD)
844302	O-RING
869311	THROTTLE VALVE CAP
TOOLS /WRENCHES	
1100-068	WRENCH 11/16"
1100-075	WRENCH 3/4"
ASSEMBLIES	
PART NUMBER	DESCRIPTION
510240	MOTOR REPAIR KIT
510118	ANGLE HEAD REPAIR KIT
402-26	SAFETY LEVER ASSY.
AA-402-132	ALUMINUM CASE ASSY. SPECIFY SPEED FOR CASE ASSY.
AA-402-132-K	ALUMINUM SAFETY CASE ASSY. SPECIFY SPEED FOR CASE ASSY.
AA-402-132-S	STEEL CASE ASSY. SPECIFY SPEED FOR CASE ASSY.
AA-402-132-SK	STEEL SAFETY CASE ASSY. SPECIFY SPEED FOR CASE ASSY.
ACCESSORIES	
PART NUMBER	DESCRIPTION
300-16	1/8" COLLET ADAPTER

HENRY TOOLS, INC. Ph: (216) 291-1011 or (800) 826-5257



Model 46ARAD Angle Grinder featuring an Erickson style collet for carbide burrs, etc.



**MODELS
46 ARAD**

HENRY TOOLS, INC. Ph: (216) 291-1011 or (800) 826-5257