

HENRY AIRTOOLS

American Made Industrial Tools

MODELS

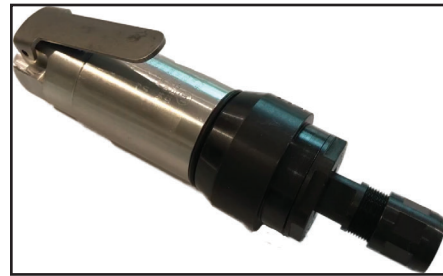
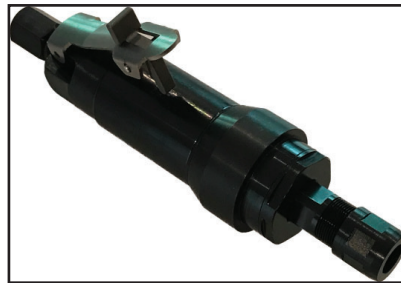
400GE

400GES



General Safety and Maintenance Manual

1.2 H.P. SIDE EXHAUST DIE GRINDER



1.2 H.P. SIDE EXHAUST DIE GRINDER

Model Number	Exhaust Direction	Throttle Type	Speed	Power Output	Case Material	Weight		Length	Diameter	Air Consumption	Collet Sizes
						Aluminum	Steel				
400GE	SIDE EXHAUST	(L) Lever	18000 R.P.M	1.2 H.P.	Alum.	1.8 lb.	2.6 lb.	7.52 Inch	1.6 inches	35 CFM	1/4 Inch Collet
400GES			20000 R.P.M	900 W		(0.8 Kg)	(1.2 Kg)	(191 mm)			
					Steel	1.8 lb.	2.6 lb.	7.52 Inch			3/8 Inch Collet
						(0.8 Kg)	(1.2 Kg)	(191 mm)		Max.	

THE HENRY TOOL CO., MANUFACTURED BY HENRY TOOLS

498 SO. BELVOIR BLVD., SOUTH EUCLID, OH 44121 U.S.A.

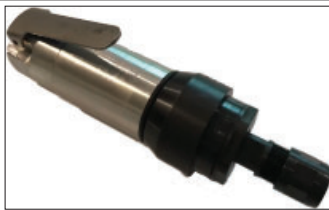
PH: (216) 291-1011 OR (800) 826-5257 • FAX: (216) 291-5949 OR (800) 303-2800

EMAIL: DAVIDH@MSN.COM • WEBSITE: WWW.HENRYTOOLS.COM

General Operators Instructions and Service Manual

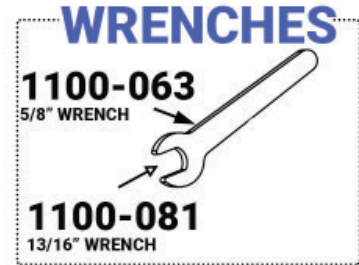


Model 400GES STEEL Side Exhaust Die Grinder.

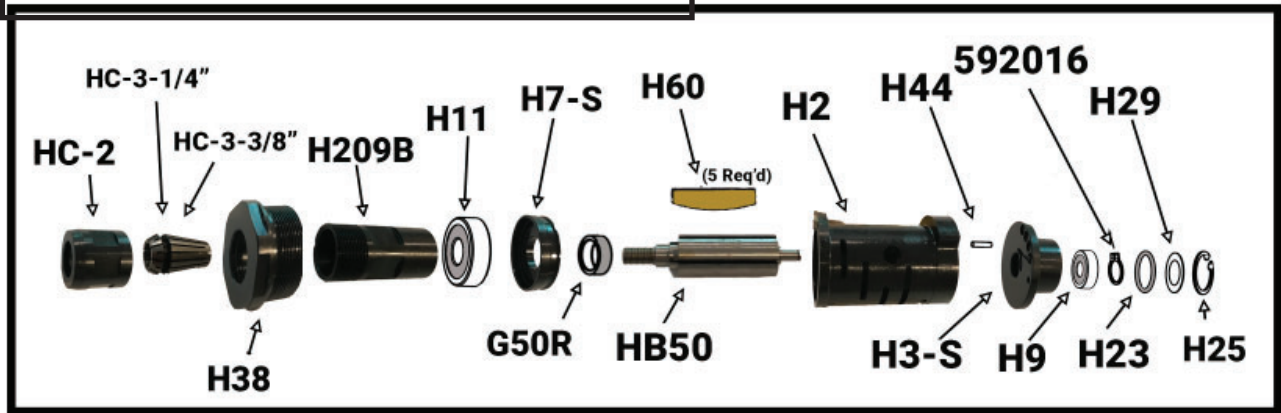


Model 400GES Aluminum Side Exhaust Die Grinder.

**MODELS
400GE
400GES**



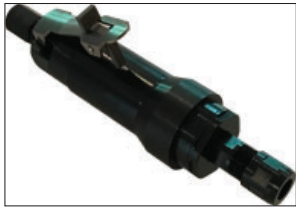
**SIDE EXHAUST MODEL
ASSEMBLY**



PART NUMBER	DESCRIPTION
H17S	Side exhaust Deflector
H51	O-Ring
H130-S	Steel Motor Case
H130	Aluminum Case
H26	Lever
841552	Bushing

PART NUMBER	DESCRIPTION
H37	Roll Pin
H32	O-Ring
H41A	Throttle Valve
400-G-34	Spring
320-9R	O-Ring
320-9F	Cover

General Operators Instructions and Service Manual



Model 400GES STEEL Side Exhaust Die Grinder. (1.2 H.P.)



Model 400GES Aluminum Side Exhaust Die Grinder.

MODELS 400GE 400GES

PART NUMBER	DESCRIPTION
592067	Snap Ring
HC-2	Collet Nut
HC-3-1/4"	1/4" Collet Insert
HC-3-3/8"	3/8" Collet Insert
H38	Motor Retainer
H209B	Collet Body
H11	Bearing
H7-S	Front End Plate
H60	Rotor Blade(5 are Req'd)
HB50	Rotor/Spindle
H2	Cylinder
H44	Cylinder Pin
H3-S	Rear EndPlate
H9	Bearing
592016	Snap Ring
H23	O-Ring
H24	Bearing Cover
H25	Snap Ring
AA-H126	Safety Lever Assembly (COMPLETE)
H127	Safety Latch
H126	Safety Lever
H128	PIN
H129	Spring
1100-063	5/8" Wrench

PART NUMBER	DESCRIPTION
1100-081	13/16" Wrench
G50R	Spacer
400GE REPAIR KIT	
510284 Repair Kit	
Includes:	
H11	Front Bearing
H60	Rotor Blade
H9	Rear Bearing
592016	Snap Ring
H23	O-Ring
H24	Bearing Cover
H25	Snap Ring
H32	O-Ring

GRINDER SAFETY

ALWAYS COMPLY WITH:

1. General Industry Safety & Health Regulations, Part 1910, OSHA 2206, available from: Sup't of Documents; Government Printing Office; Washington DC 20402
2. Safety Code for Portable Air Tools, ANSI B186.1 available from: American National Standards Institute, Inc.; 1430 Broadway; New York, NY 10018
3. State and Local regulations.
4. Portions of the above codes and regulations are listed below for quick reference.

THESE EXCERPTS ARE NOT INTENDED TO BE ALL INCLUSIVE - STUDY AND COMPLY WITH ALL REGULATIONS!

1. Always turn off the air supply and disconnect the air supply hose before installing, removing or adjusting any accessory on this tool, or before performing any maintenance on this tool.
2. After mounting a wheel or other abrasive accessory, the Grinder shall be run in a protected enclosure, at gradually increasing speed, for at least 60 seconds. When starting work with a cold wheel, apply it gradually to the workpiece until it becomes warm. Do not continue to use a grinder if:
 - The speed rating of the accessory is less than the speed of the grinder
 - If tool vibrates repair immediately.

HENRY TOOLS, INC. Ph: (216) 291-1011 or (800) 826-5257